

FACADE MOUNTING SYSTEMS FOR PV MODULES



SRMC / SRMCT
SOLAR RETROFIT
SHORT MODEL



SRMCPA
SOLAR RETROFIT
COPLANAR MODEL



SRMP
SOLAR RETROFIT
CANOPY MODEL



SRMCPB
SOLAR RETROFIT
COPLANAR MODEL

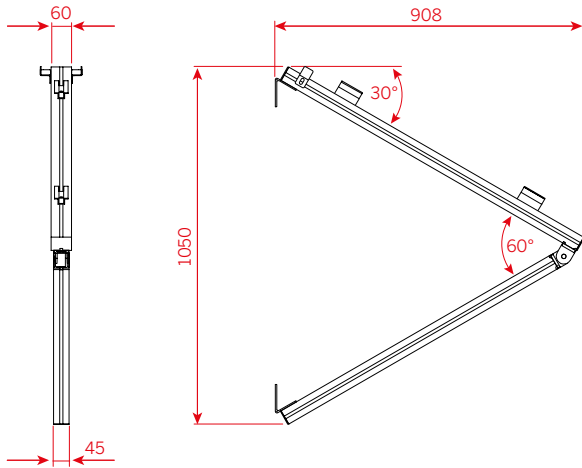


SRML
SOLAR RETROFIT
LONG MODEL



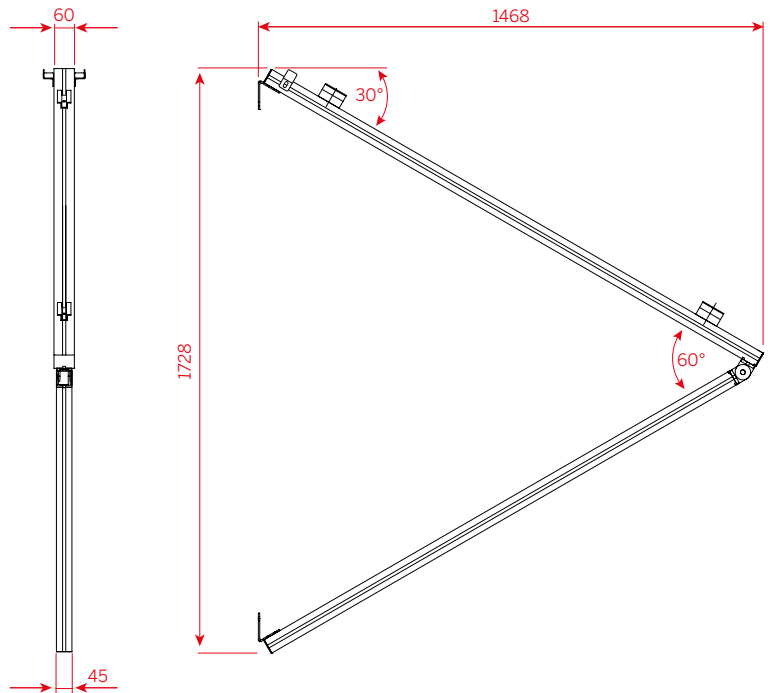
SRMCP
SOLAR RETROFIT
COPLANAR MODEL

PRODUCT SHEET



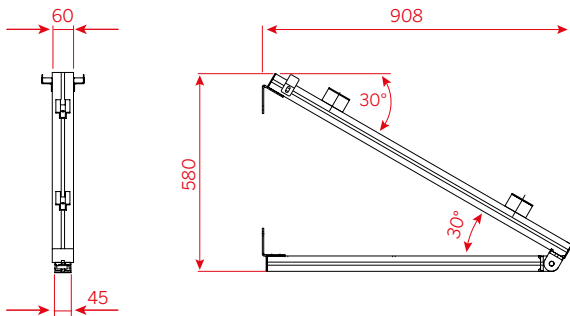
Support SRMC

Material: Anodized aluminium
 Sizes: 908x1050mm
 Thickness: 60x45mm
 45x45mm



Support SRMCT

Material: Anodized aluminium
 Sizes: 1468x1728mm
 Thickness: 60x45mm
 45x45mm

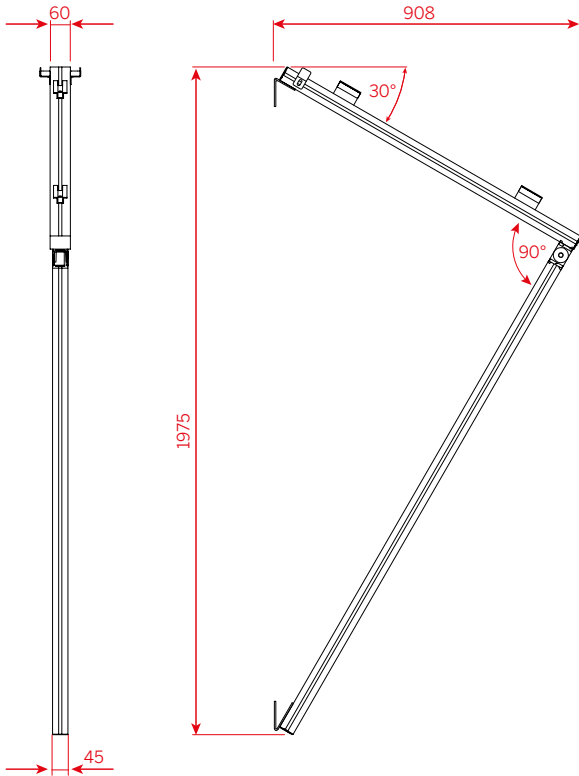


Support SRMP

Material: Anodized aluminium
 Sizes: 908x580mm
 Thickness: 60x45mm
 45x45mm

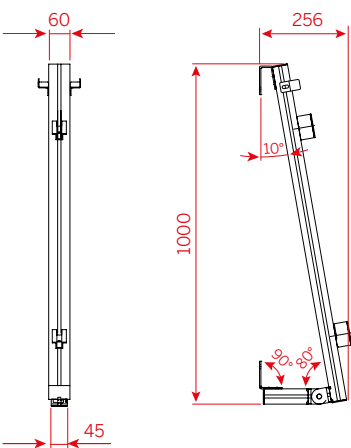
Solar Retrofit

PRODUCT SHEET



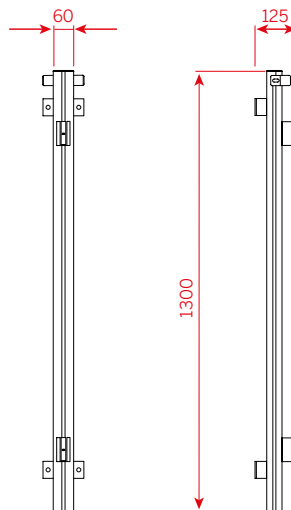
Support SRML

Material: Anodized aluminium
 Sizes: 908x1975mm
 Thickness: 60x45mm
 45x45mm



Support SRMCPA

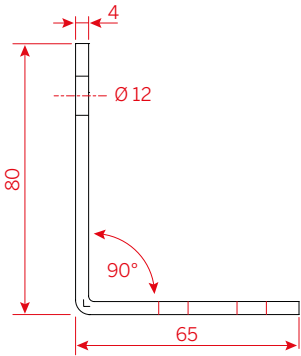
Material: Anodized aluminium
 Sizes: 256x1000mm
 Thickness: 60x45mm
 45x45mm



Support SRMCPB

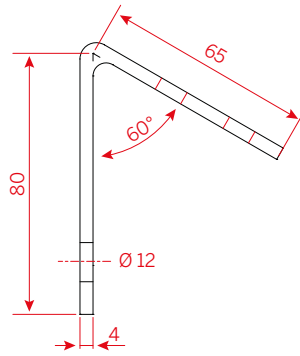
Material: Anodized aluminium
 Sizes: 125x1300mm
 Thickness: 60x45mm

WALL MOUNTING BRACKET 90°



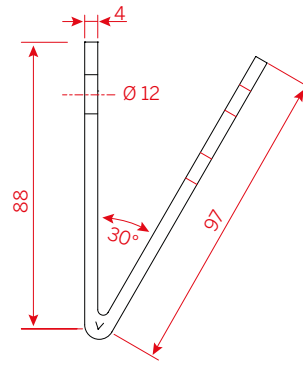
SRMP / SRMCPA

WALL MOUNTING BRACKET 60°



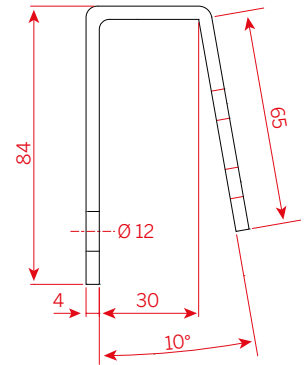
SRMC / SRMCT
SRMP / SRML

WALL MOUNTING BRACKET 30°



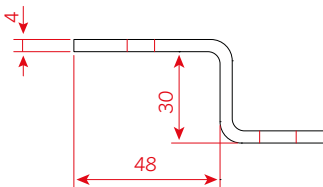
SRML

WALL MOUNTING BRACKET 10°

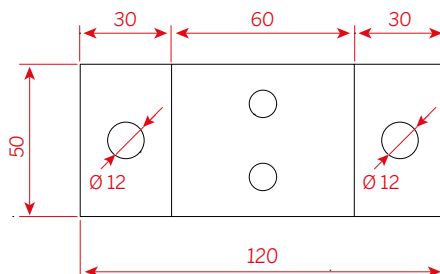
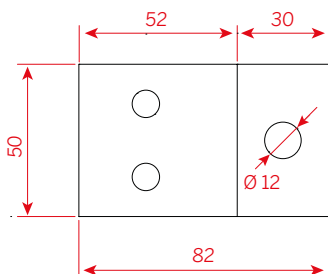
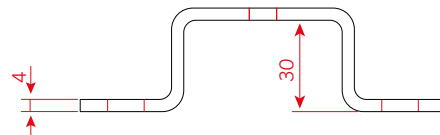


SRMCPA

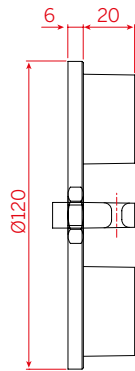
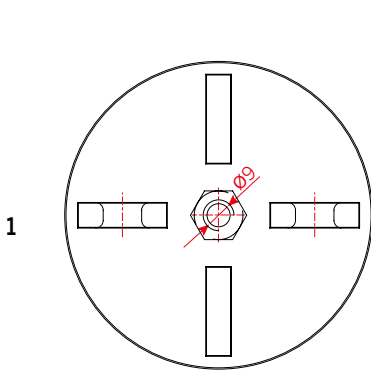
WALL MOUNTING LATERAL BRACKET



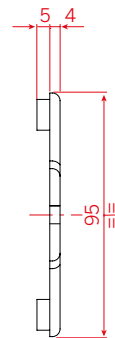
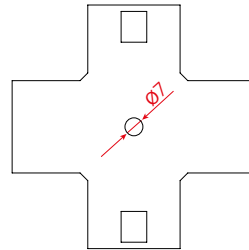
WALL MOUNTING CENTRAL BRACKET



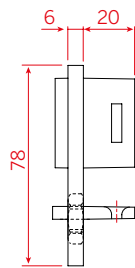
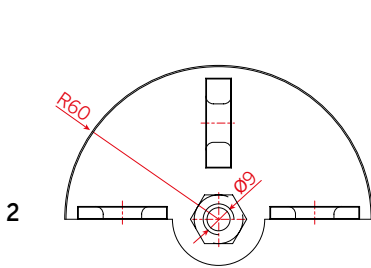
SRMCPB



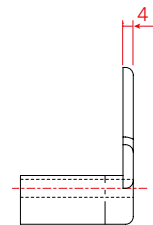
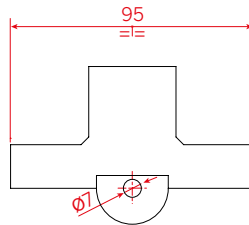
11



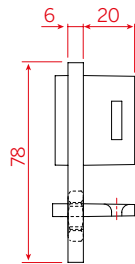
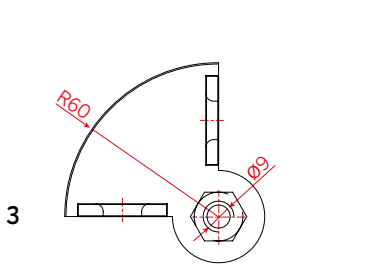
Central support



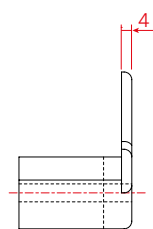
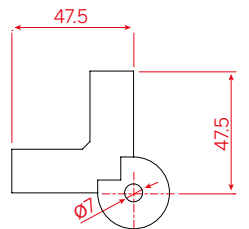
22



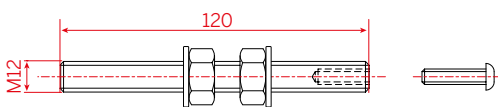
Lateral support



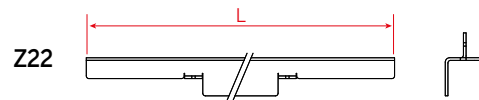
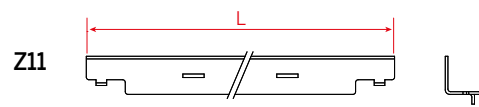
33



Corner support



Threaded stem



Brackets

Support SRMCP

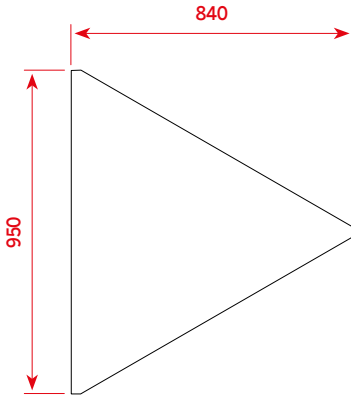
Material: Anodized aluminium EN AB 44100

Brackets: AISI 304

With:

- M12 stainless steel AISI 304 threaded stem (L120 mm - others L on request)
- M6 stainless steel AISI 304 screw
- nr. 2 M12 stainless steel AISI 304 hexagonal nuts
- nr. 2 M12 stainless steel AISI 304 washers

PRODUCT SHEET

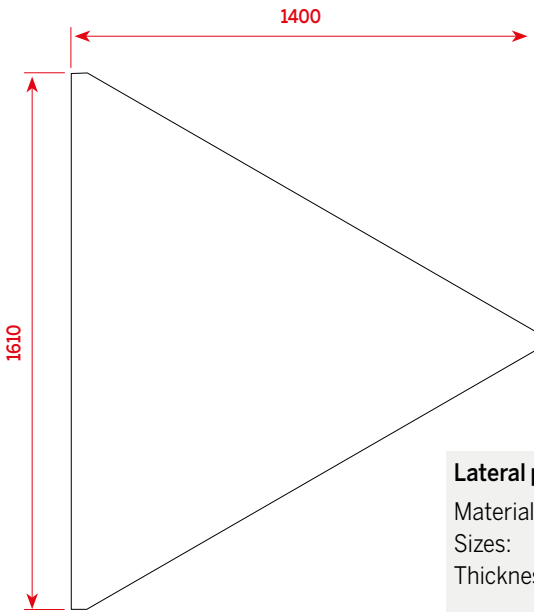
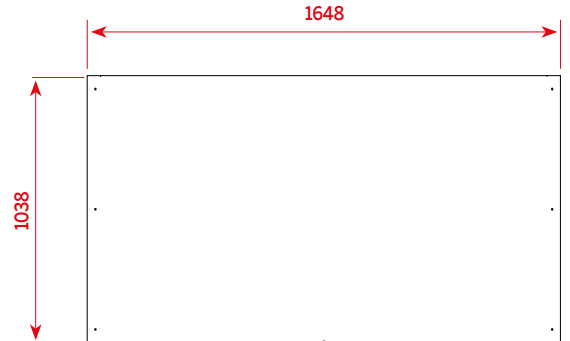


Lateral protection for model SRMC

Material: Anodized aluminium
 Sizes: 840x950x20mm
 Thickness: 2mm

Bottom protection for model SRMC

Material: Anodized aluminium
 Sizes: 1648x1038x20mm
 Thickness: 2mm

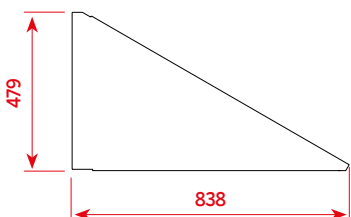
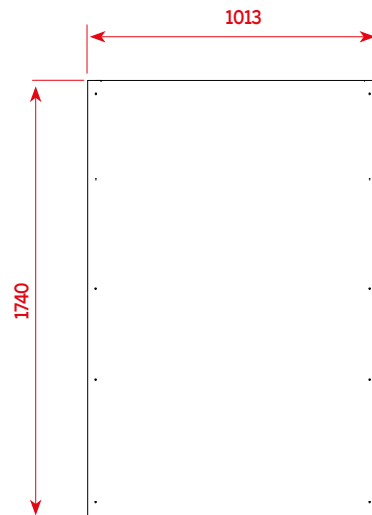


Lateral protection for mod. SRMCT

Material: Anodized aluminium
 Sizes: 1400x1610x20mm
 Thickness: 2mm

Bottom protection for mod. SRMCT

Material: Anodized aluminium
 Sizes: 1013x1740x20mm
 Thickness: 2mm

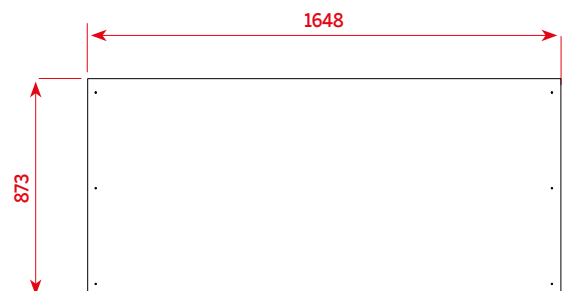


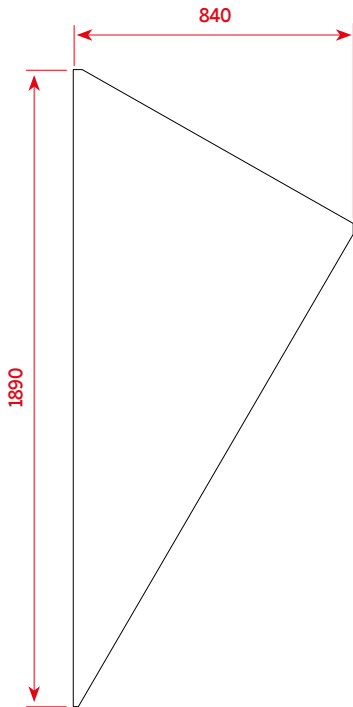
Lateral protection for model SRMP

Material: Anodized aluminium
 Sizes: 838x479x20mm
 Thickness: 2mm

Bottom protection model SRMP

Material: Anodized aluminium
 Sizes: 1648x873x20mm
 Thickness: 2mm



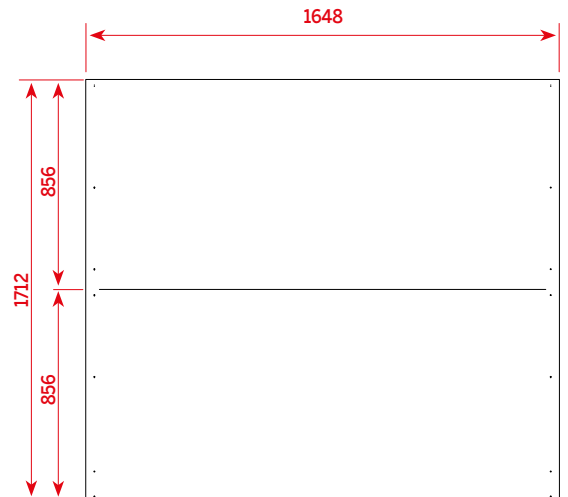


Lateral protection for model SRML

Material: Anodized aluminium
Sizes: 840x1890x20mm
Thickness: 2mm

Reflector for model SRML

Material: Anodized aluminium
Sizes: 1648x1712x20mm
Thickness: 2mm



INSTALLATION SHEET

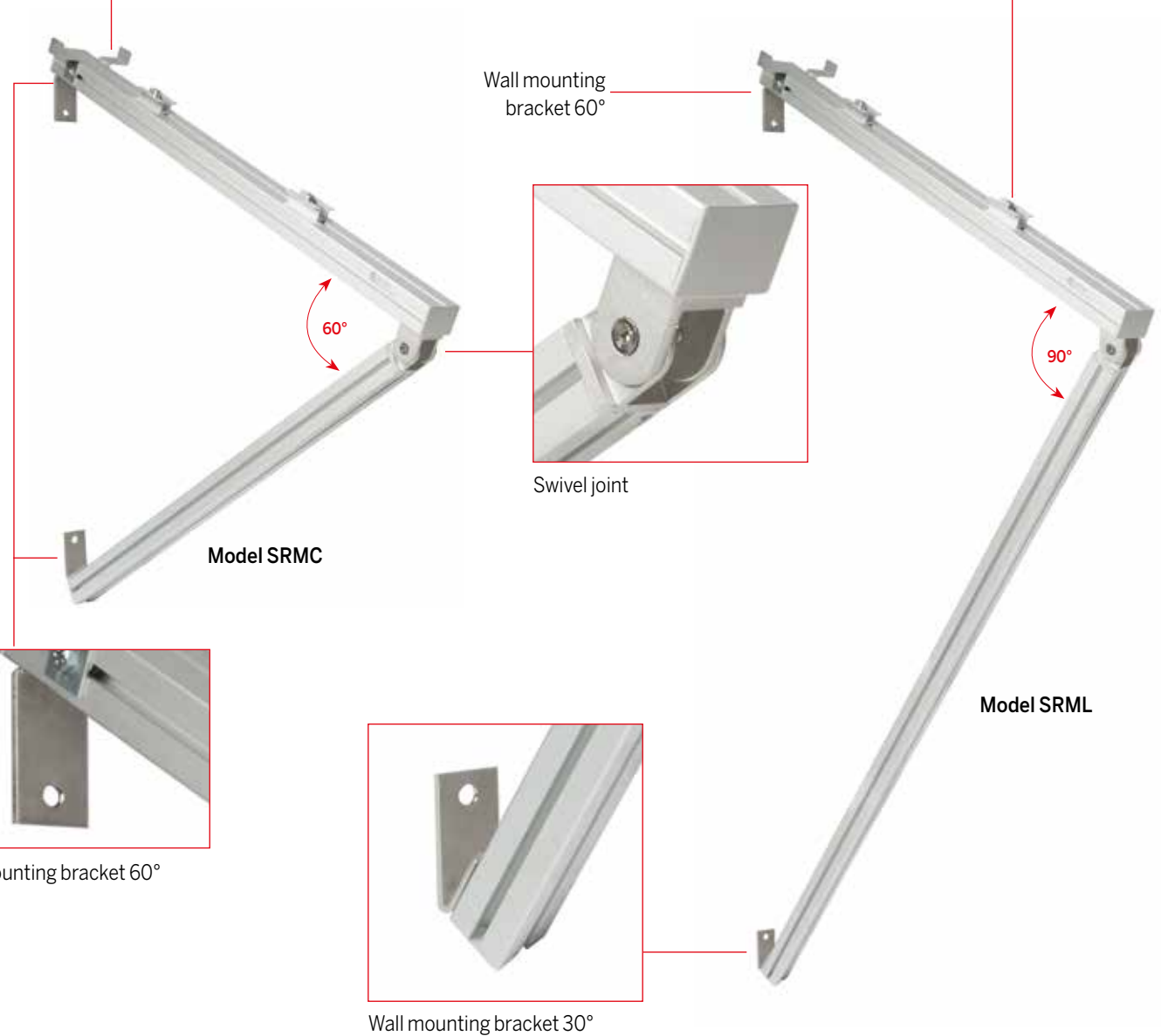
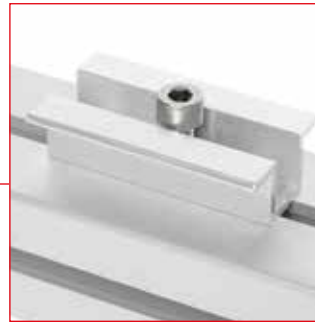
Block system for PV module



Lateral clamp



Central clamp

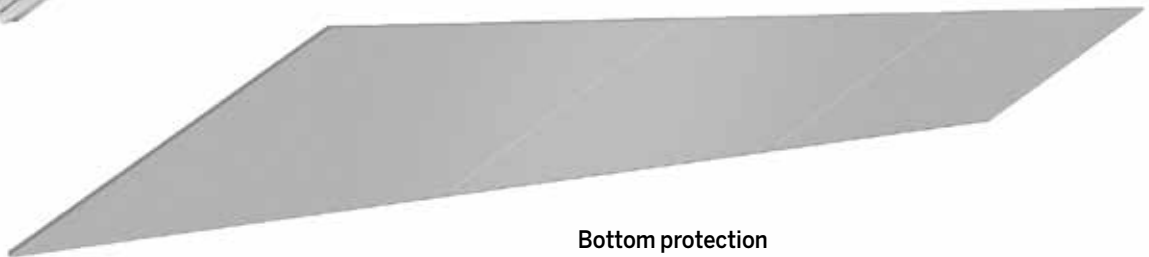


INSTALLATION SHEET model SRMC full mounting

PV modules



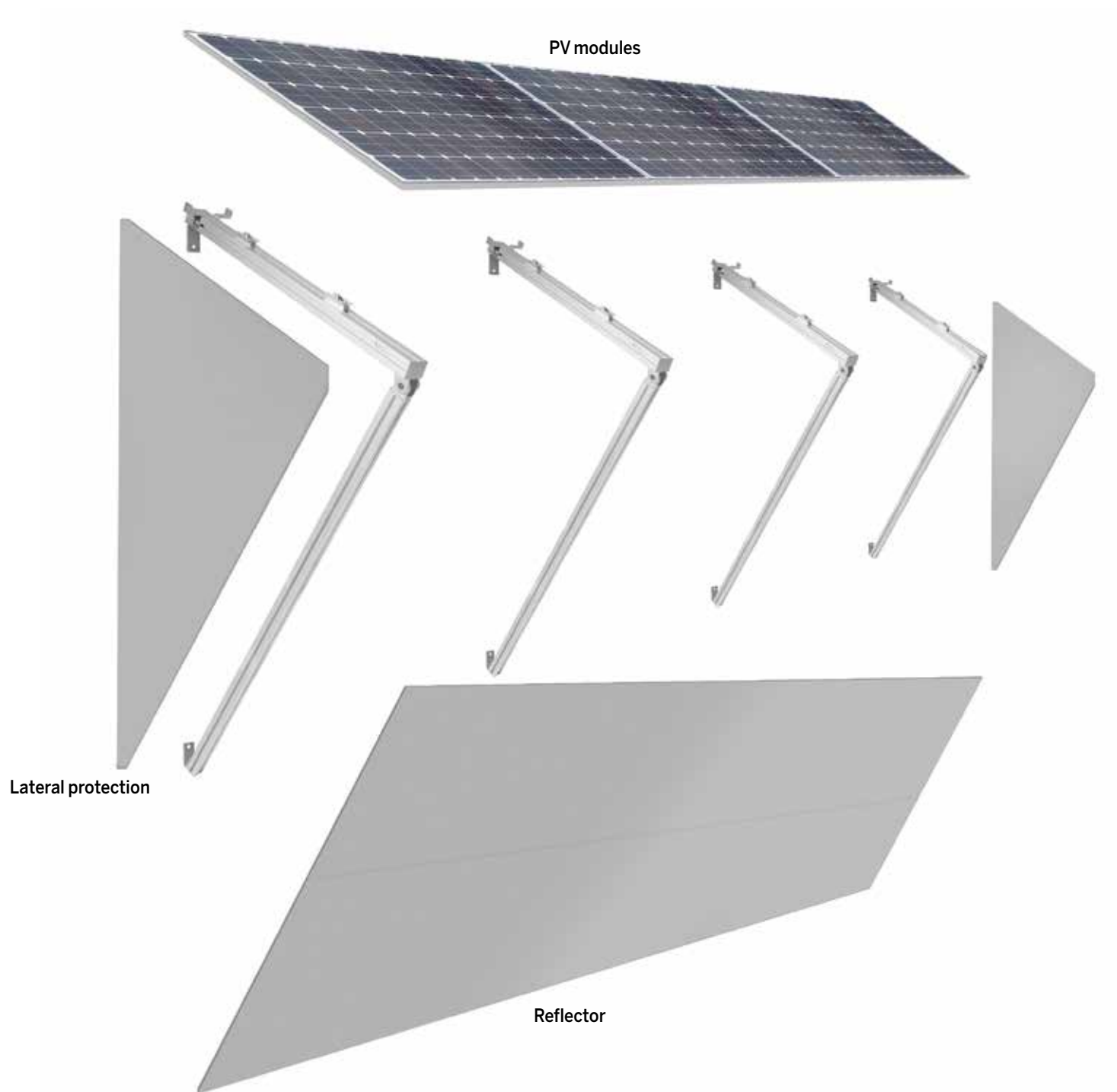
Lateral protection



Bottom protection



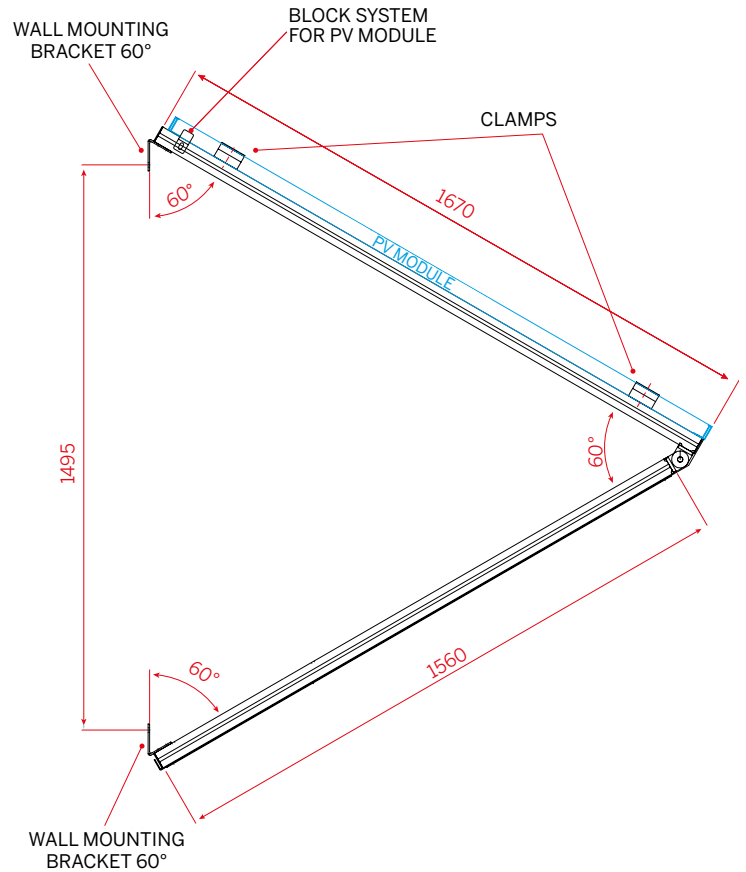
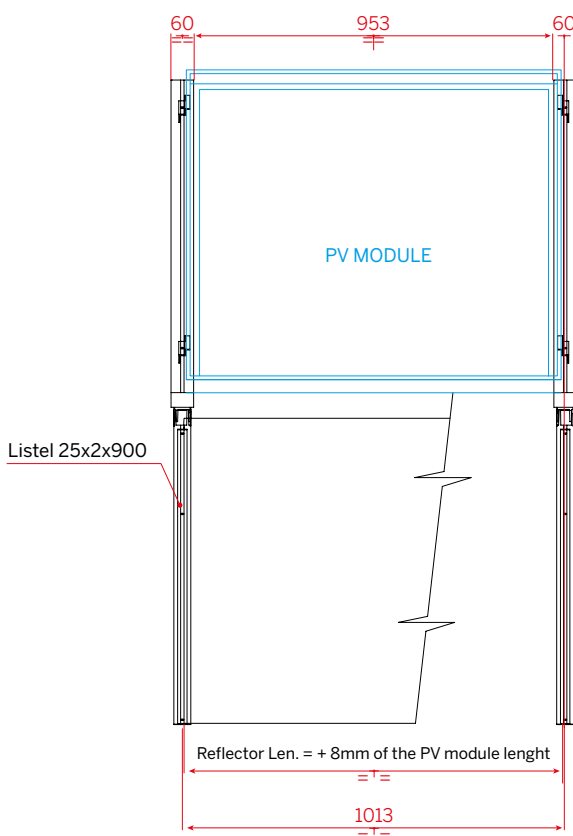
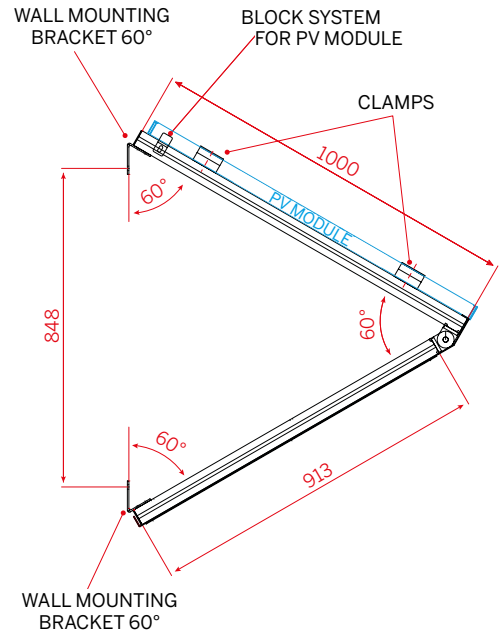
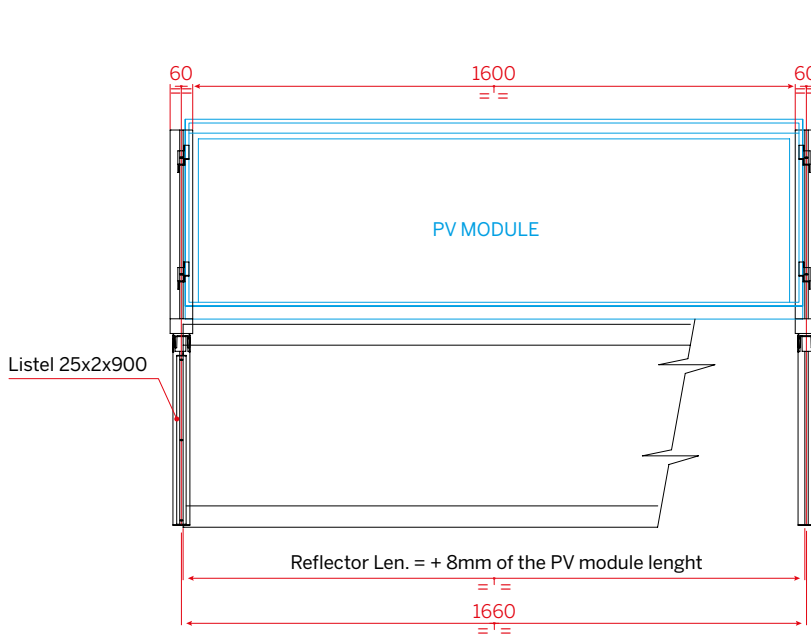
INSTALLATION SHEET model SRML



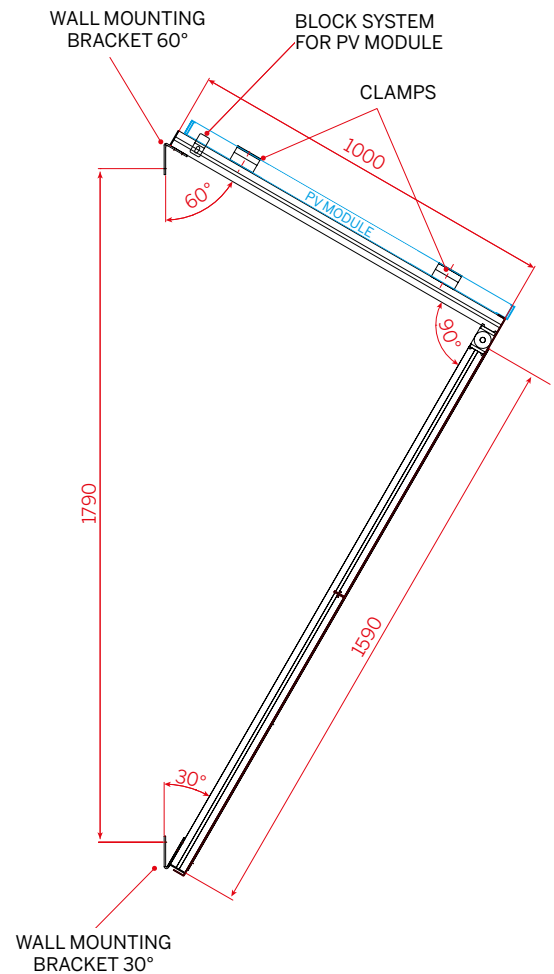
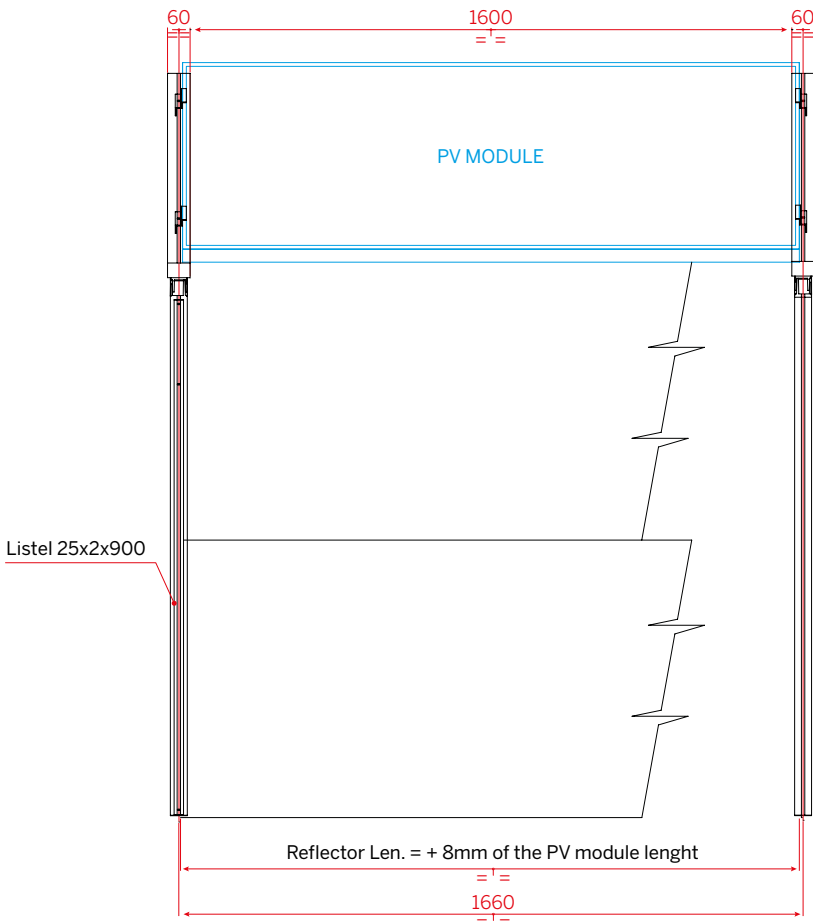
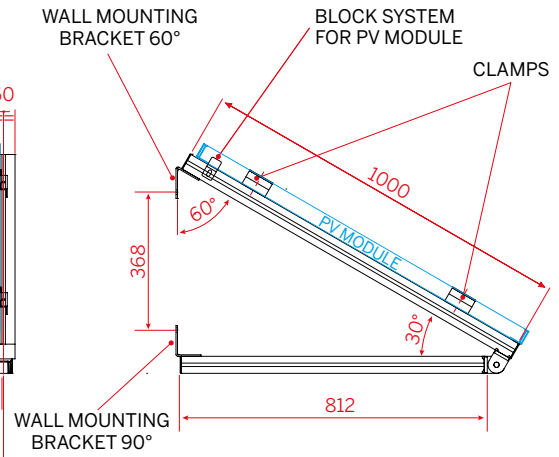
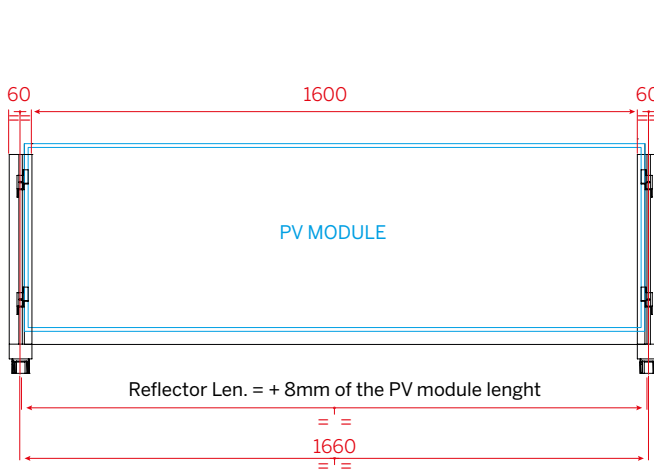
INSTALLATION SHEET
model SRML
full mounting



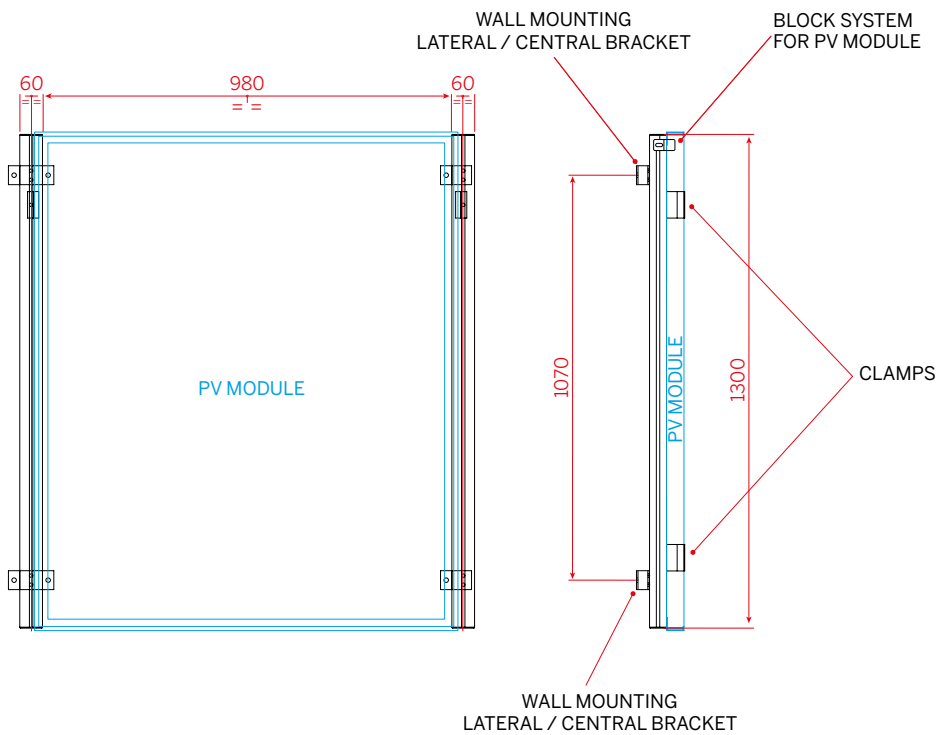
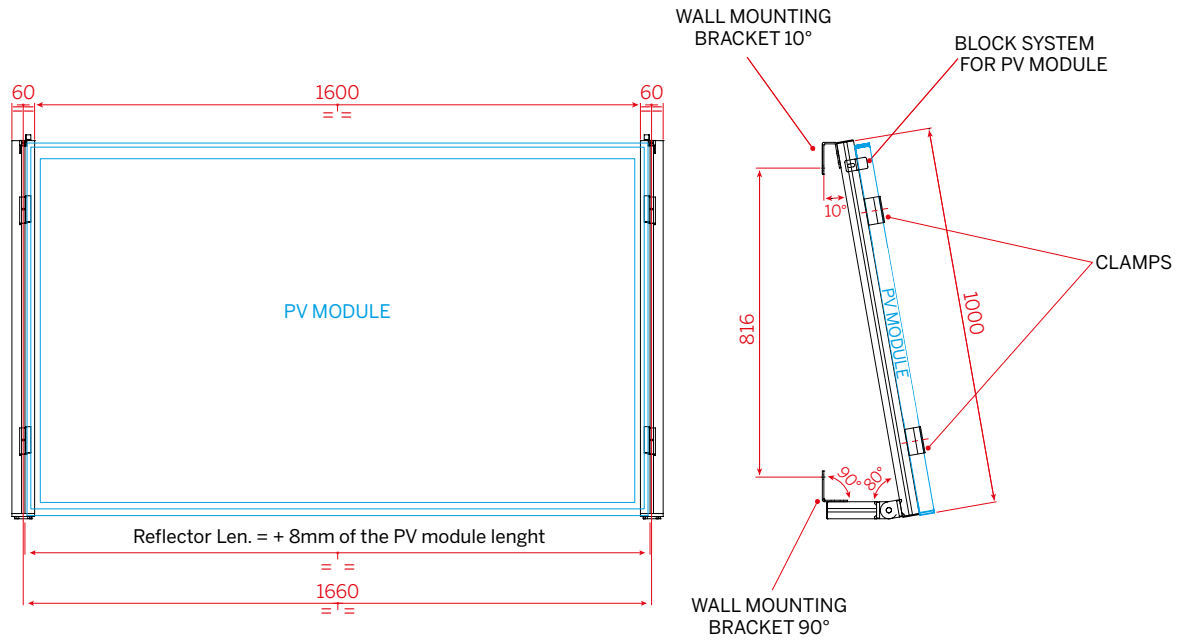
MOUNTING SHEET model SRMC - SRMCT



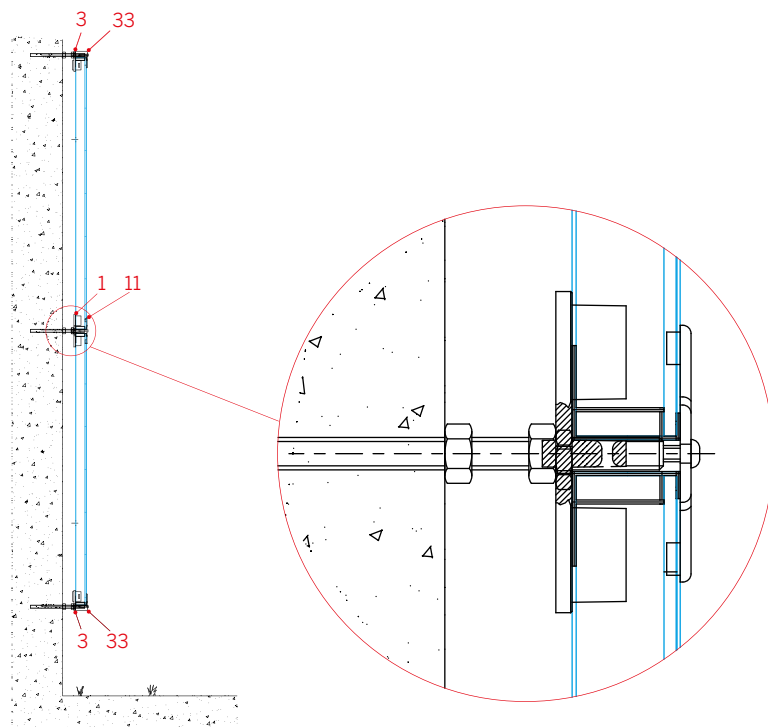
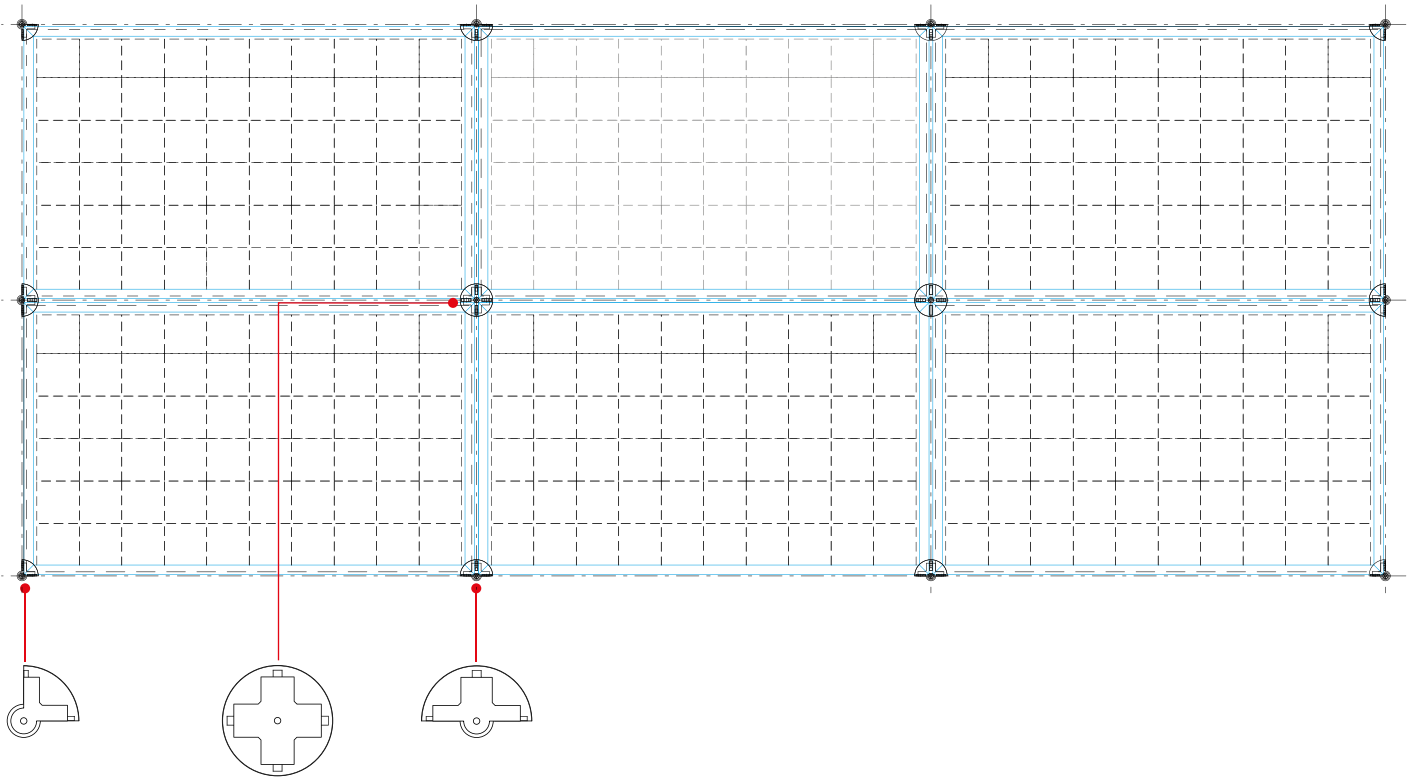
MOUNTING SHEET model SRMP - SRML



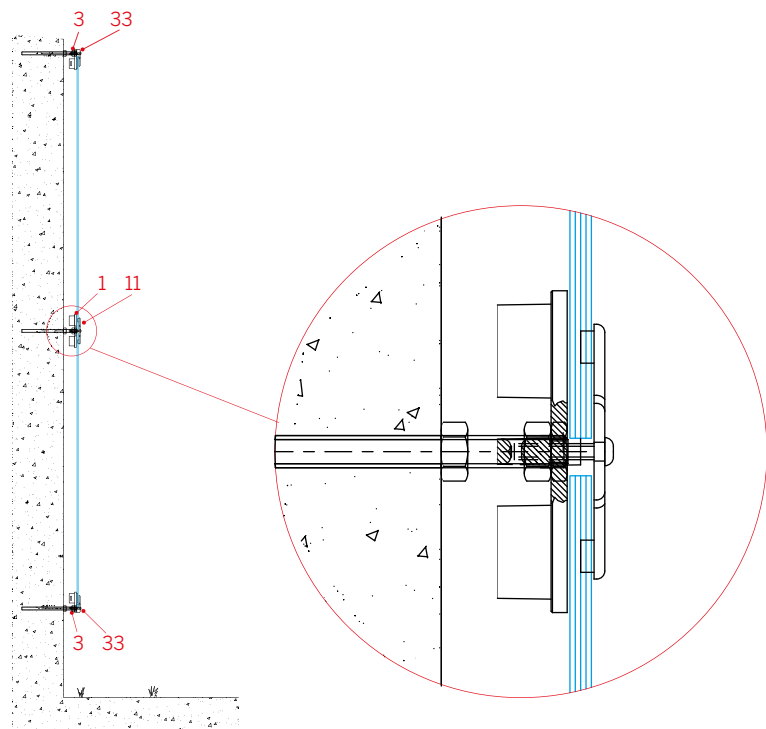
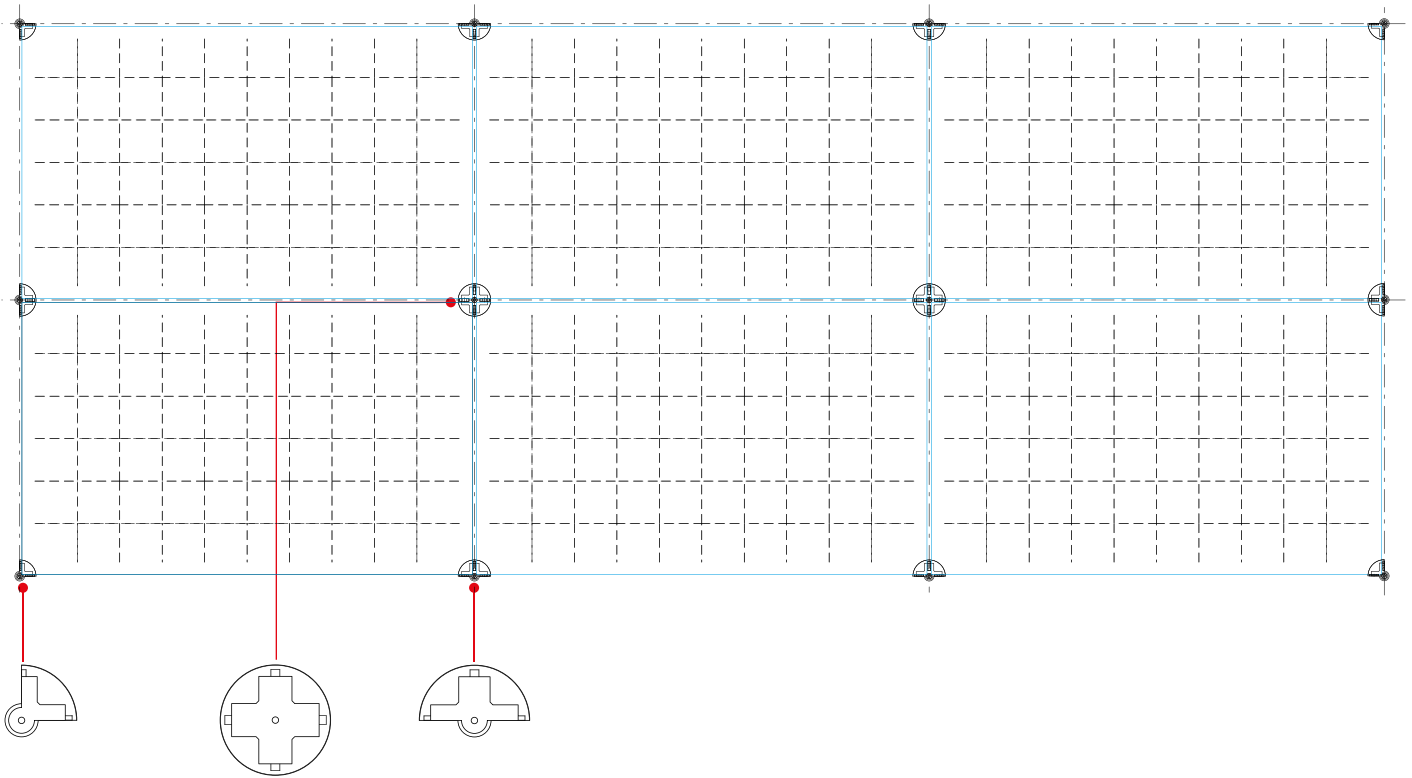
MOUNTING SHEET model SRMCPA - SRMCPB



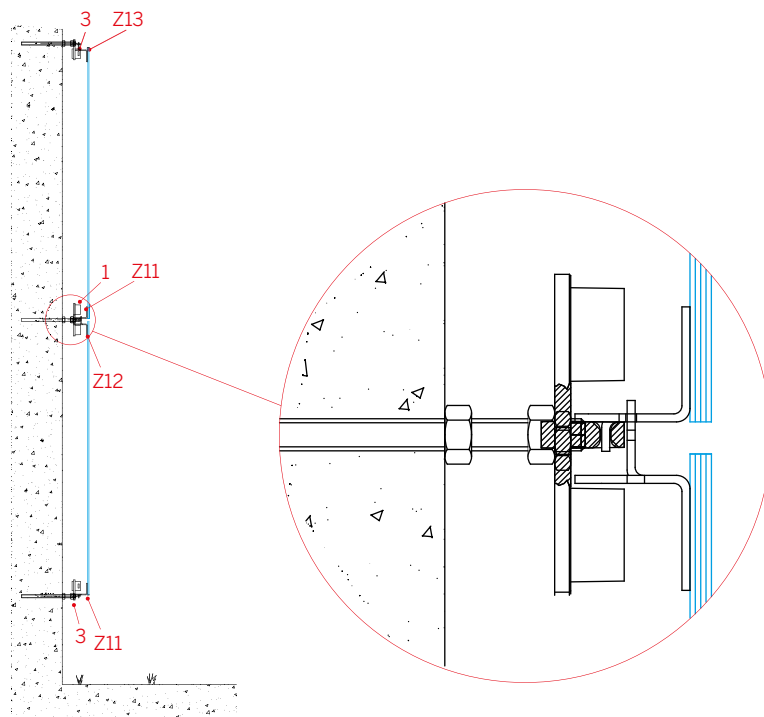
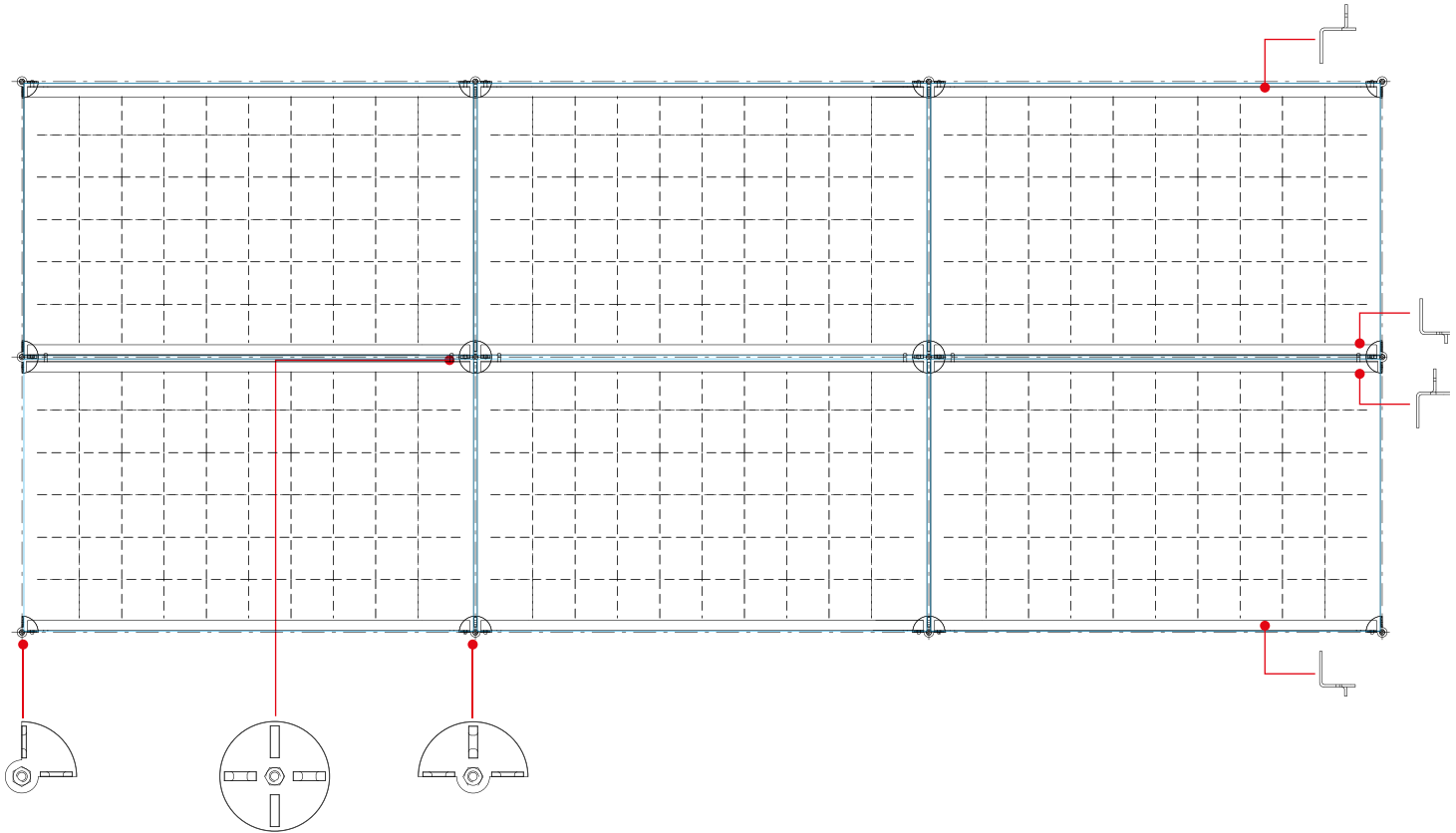
MOUNTING SHEET model SRMCP

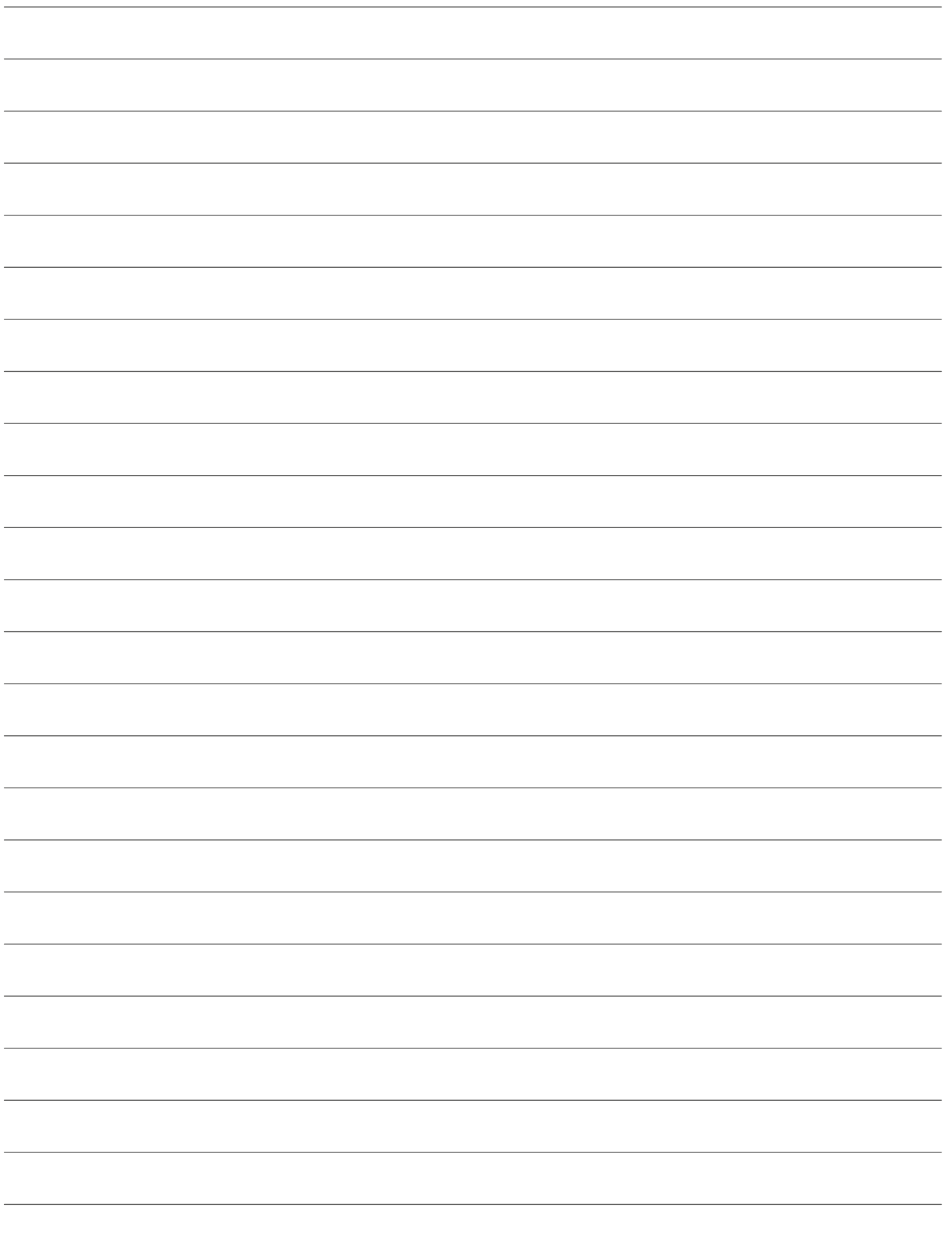


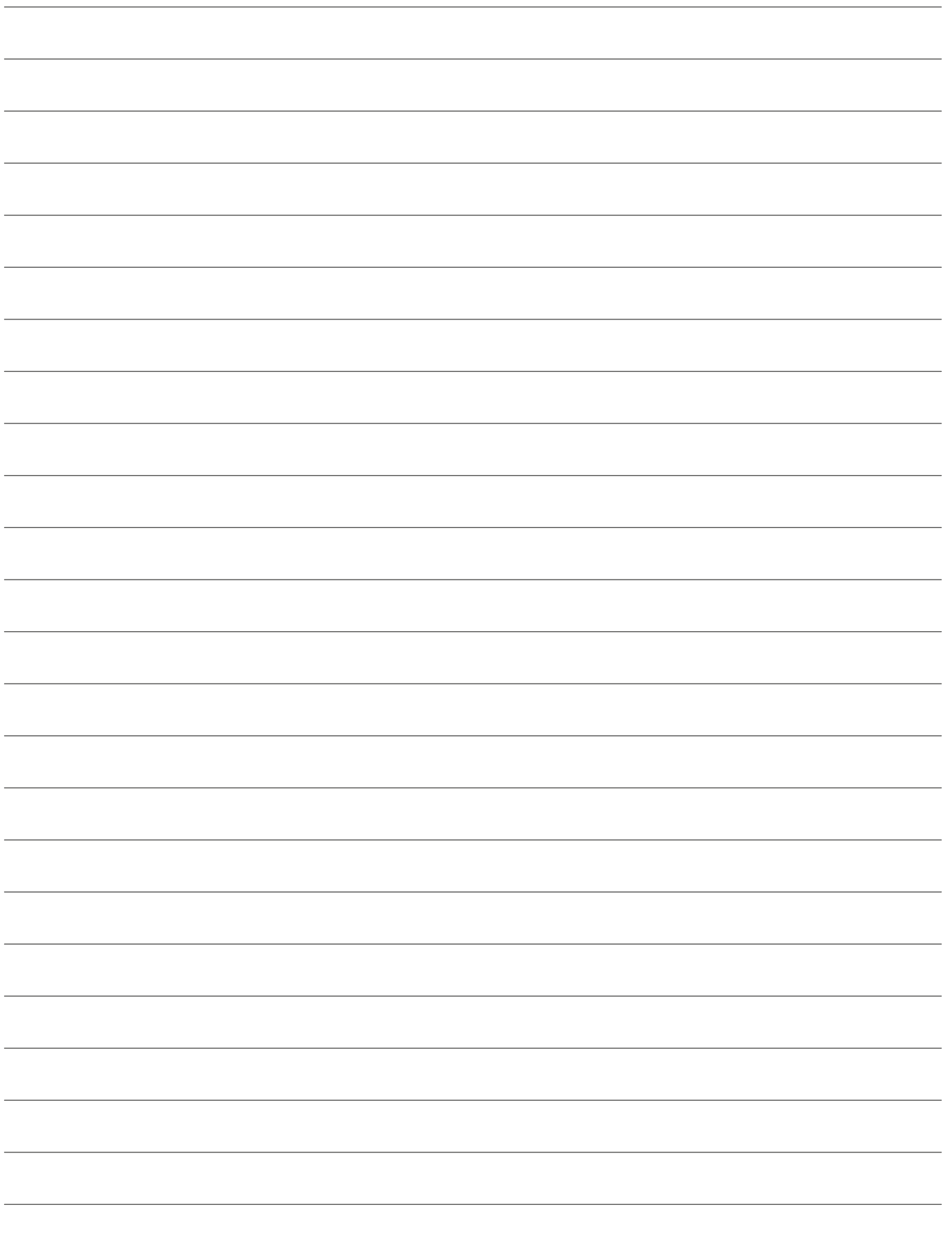
MOUNTING SHEET model SRMCP



MOUNTING SHEET model SRMCP









Solar Retrofit Sagl

Viale Verbano 7

6602 Locarno Muralto (CH)

Tel. +41 (0)91 7519641

Mobile +39 335 6971695

Fax +41 (0)91 7515221

www.solar-retrofit.ch

lanteri.e@solar-retrofit.ch

