

SISTEMI DI MONTAGGIO A PARETE PER MODULI FOTOVOLTAICI



SRMC / SRMCT
SOLAR RETROFIT
MODELLO CORTO



SRMCPA
SOLAR RETROFIT
MODELLO COMPLANARE



SRMP
SOLAR RETROFIT
MODELLO PENSILINA



SRMCPB
SOLAR RETROFIT
MODELLO COMPLANARE

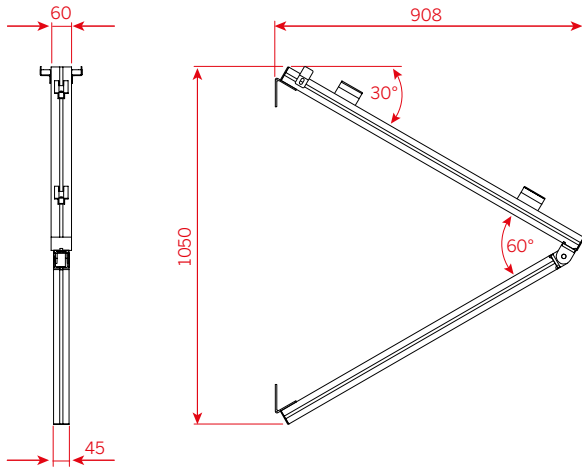


SRML
SOLAR RETROFIT
MODELLO LUNGO



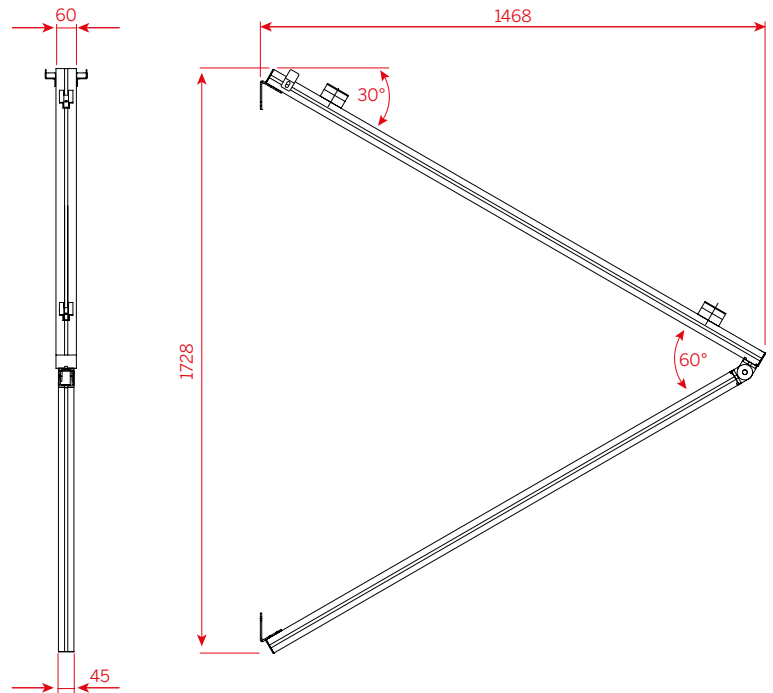
SRMCP
SOLAR RETROFIT
MODELLO COMPLANARE

SCHEMA PRODOTTO



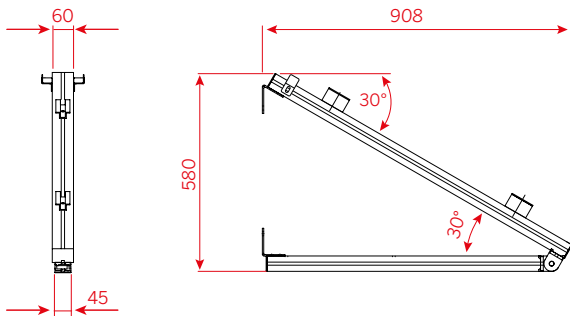
Supporto SRMC

Materiale: Alluminio anodizzato
Dimensioni: 908x1050 mm
Spessore: 60x45 mm
45x45 mm



Supporto SRMCT

Materiale: Alluminio anodizzato
Dimensioni: 1468x1728 mm
Spessore: 60x45 mm
45x45 mm

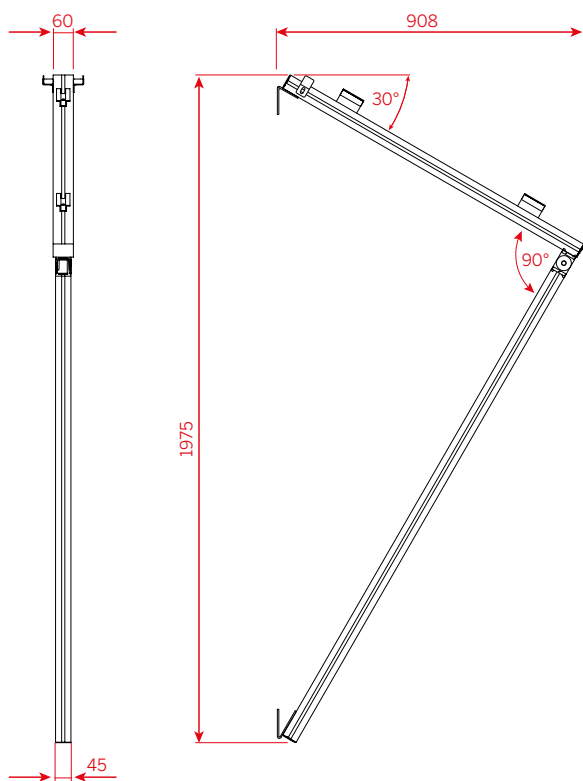


Supporto SRMP

Materiale: Alluminio anodizzato
Dimensioni: 908x580 mm
Spessore: 60x45 mm
45x45 mm

Solar Retrofit

SCHEMA PRODOTTO



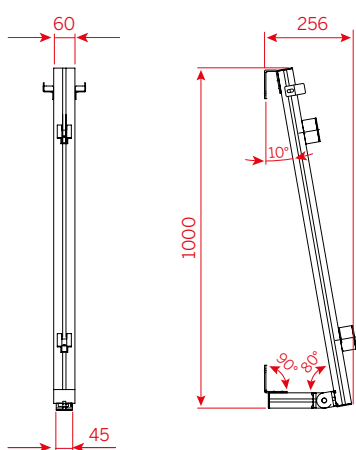
Supporto SRML

Materiale: Alluminio anodizzato

Dimensioni: 908x1975 mm

Spessore: 60x45 mm

45x45 mm



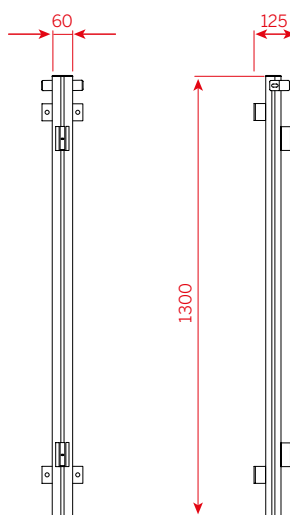
Supporto SRMCPA

Materiale: Alluminio anodizzato

Dimensioni: 256x1000 mm

Spessore: 60x45 mm

45x45 mm



Supporto SRMCPB

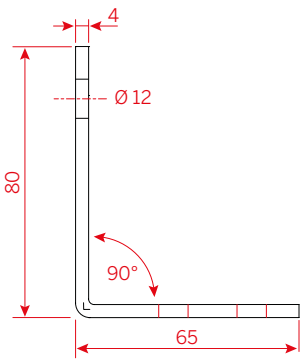
Materiale: Alluminio anodizzato

Dimensioni: 125x1300 mm

Spessore: 60x45 mm

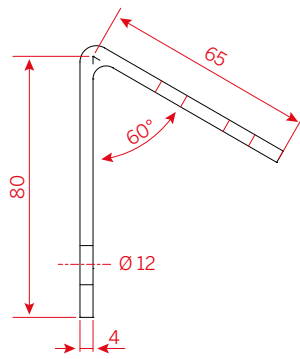
SCHEMA PRODOTTO

ZANCA 90°
FISSAGGIO ALLA PARETE



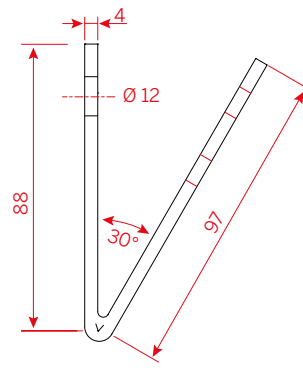
SRMP / SRMCPA

ZANCA 60°
FISSAGGIO ALLA PARETE



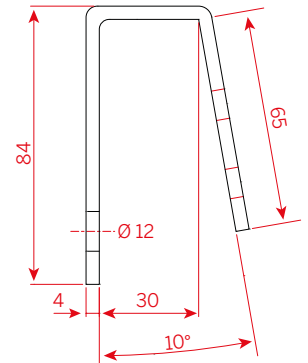
SRMC / SRMCT
SRMP / SRML

ZANCA 30°
FISSAGGIO ALLA PARETE



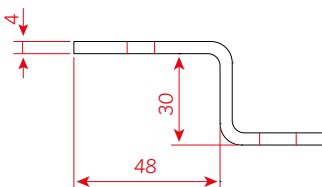
SRML

ZANCA 10°
FISSAGGIO ALLA PARETE

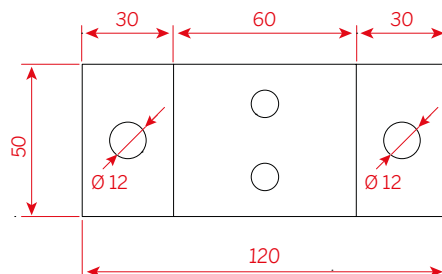
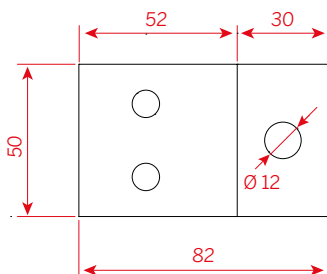
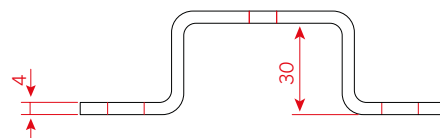


SRMCPA

ZANCA LATERALE
FISSAGGIO ALLA PARETE

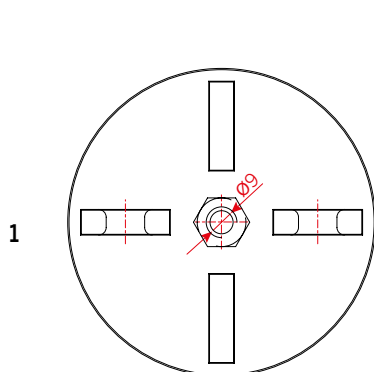


ZANCA CENTRALE
FISSAGGIO ALLA PARETE

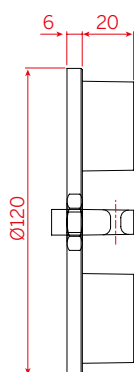


SRMCPB

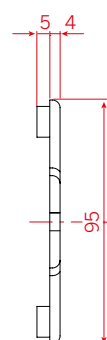
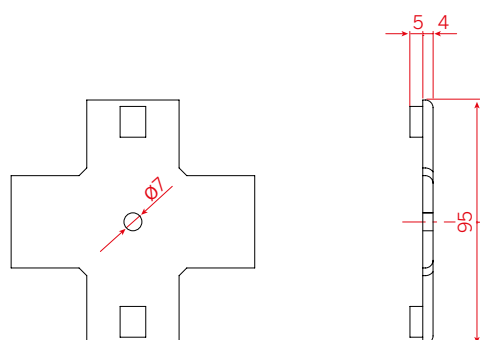
SCHEDA PRODOTTO



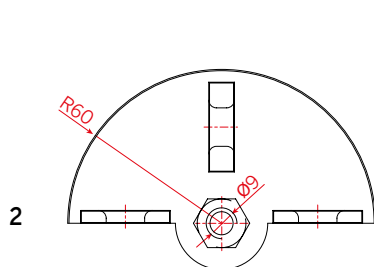
1



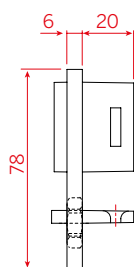
11



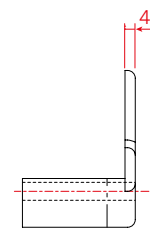
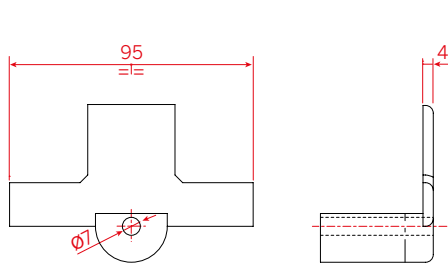
Supporto centrale



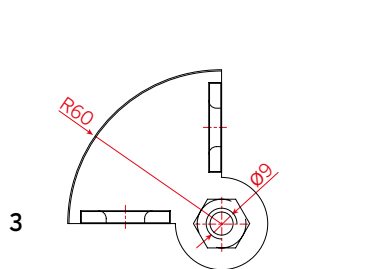
2



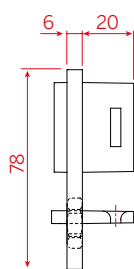
22



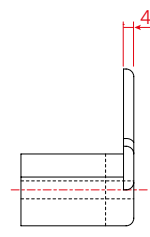
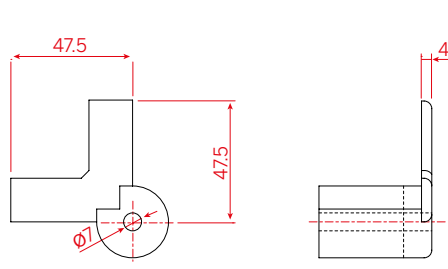
Supporto laterale



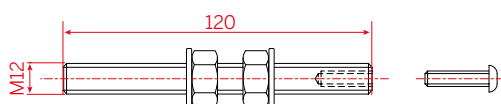
3



33



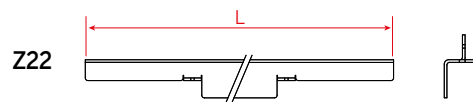
Supporto angolare



Tirante



Z11



Z22



Z33

Zanche

Supporto SRMCP

Materiale: Alluminio EN AB44100

Zanche: AISI 304

Completi di:

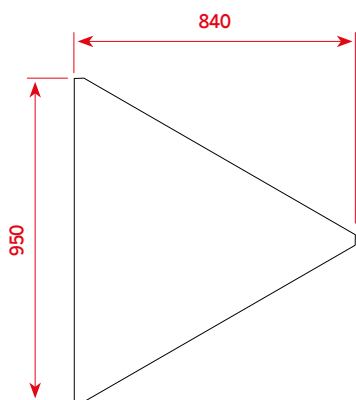
- tirante filettato M12 in acciaio inox AISI 304 (L120 mm - altre L su richiesta)

- vite M6 in acciaio inox AISI 304

- 2 dadi esagonali M12 in acciaio inox AISI 304

- 2 rondelle M12 in acciaio inox AISI 304

SCHEMA PRODOTTO

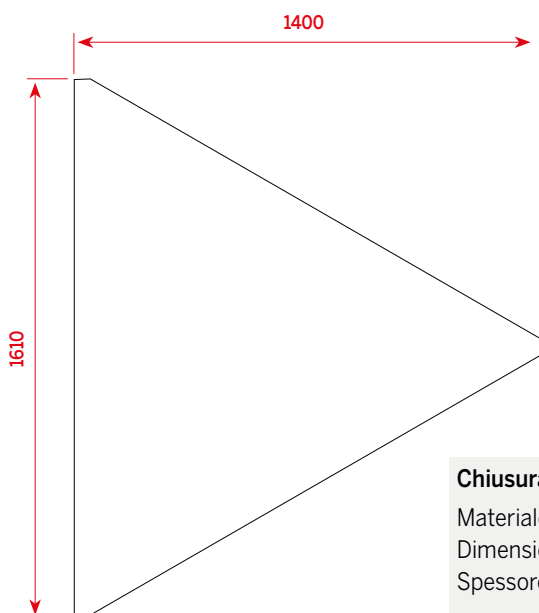
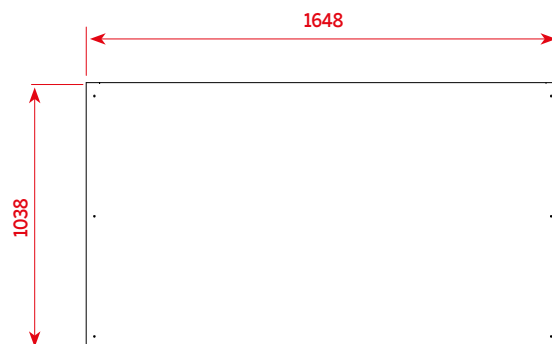


Chiusura laterale per mod. SRMC

Materiale: Alluminio anodizzato
Dimensioni: 840x950x20 mm
Spessore: 2 mm

Chiusura inferiore per mod. SRMC

Materiale : Alluminio anodizzato
Dimensioni: 1648x1038x20 mm
Spessore: 2 mm

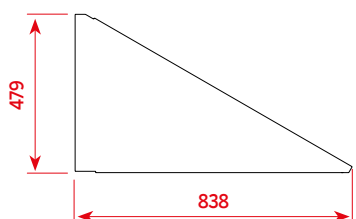
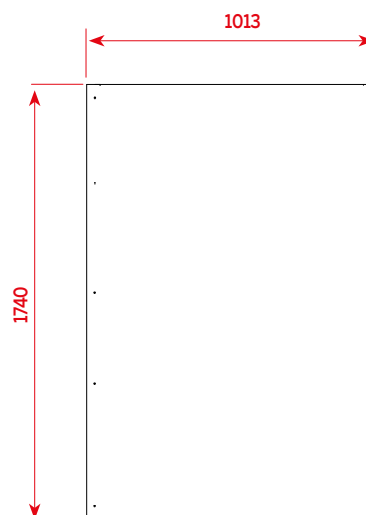


Chiusura laterale per mod. SRMCT

Materiale: Alluminio anodizzato
Dimensioni: 1400x1610x20 mm
Spessore: 2 mm

Chiusura inferiore per mod. SRMCT

Materiale : Alluminio anodizzato
Dimensioni: 1013x1740x20 mm
Spessore: 2 mm

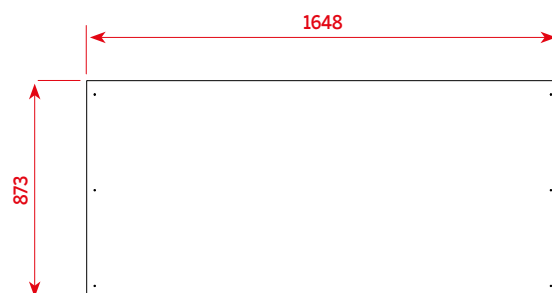


Chiusura laterale per mod. SRMP

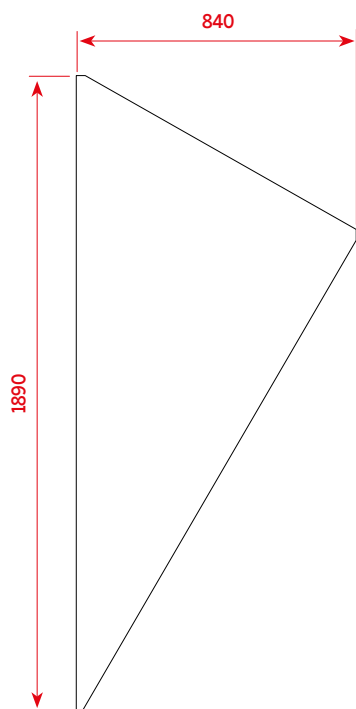
Materiale: Alluminio anodizzato
Dimensioni: 838x479x20 mm
Spessore: 2 mm

Chiusura inferiore per mod. SRMP

Materiale: Alluminio anodizzato
Dimensioni: 1648x873x20 mm
Spessore: 2 mm



SCHEMA PRODOTTO

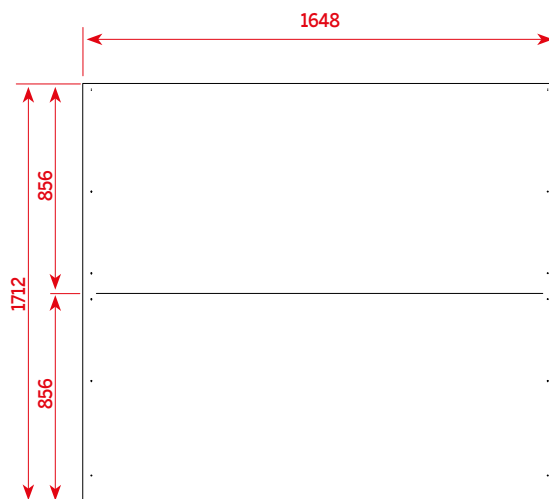


Chiusura laterale per mod. SRML

Materiale: Alluminio anodizzato
Dimensioni: 840x1890x20 mm
Spessore: 2 mm

Riflettore per mod. SRML

Materiale: Alluminio anodizzato
Dimensioni: 1648x1712x20 mm
Spessore: 2 mm

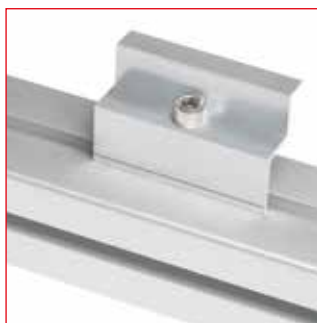


SCHEMA INSTALLAZIONE

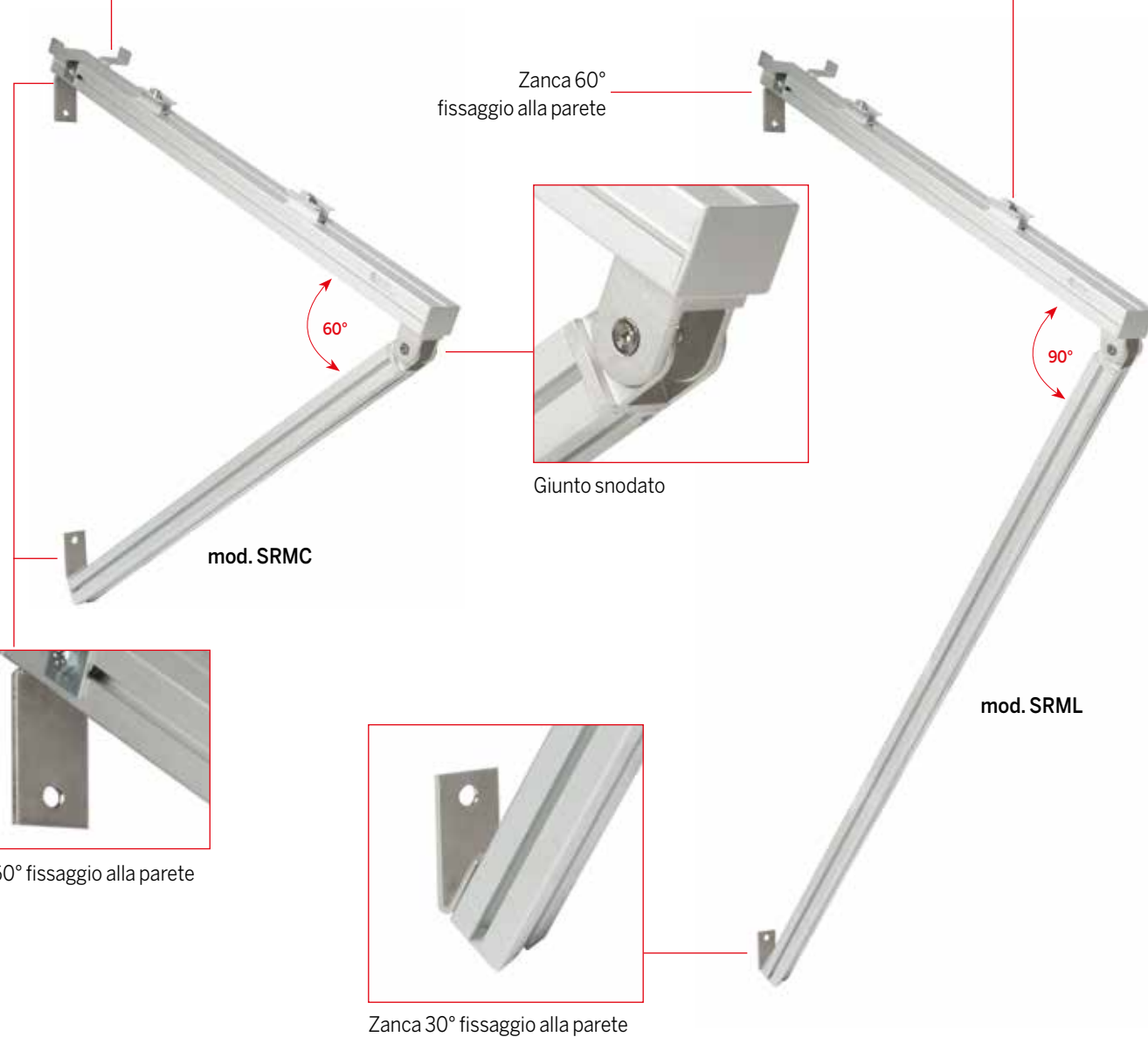
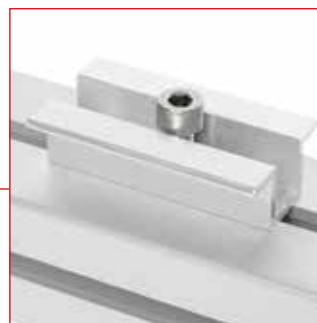
Fermo anticaduta modulo PV



Morsetto per supporto laterale



Morsetto per supporto centrale



Zanca 60°
fissaggio alla parete

60°

Giunto snodato

mod. SRMC

mod. SRML

90°

Zanca 60° fissaggio alla parete

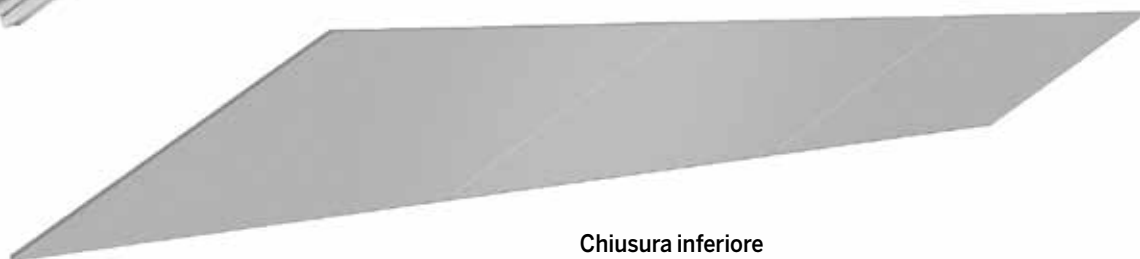
Zanca 30° fissaggio alla parete

SCHEMA INSTALLAZIONE mod. SRMC installazione completa

Moduli fotovoltaici



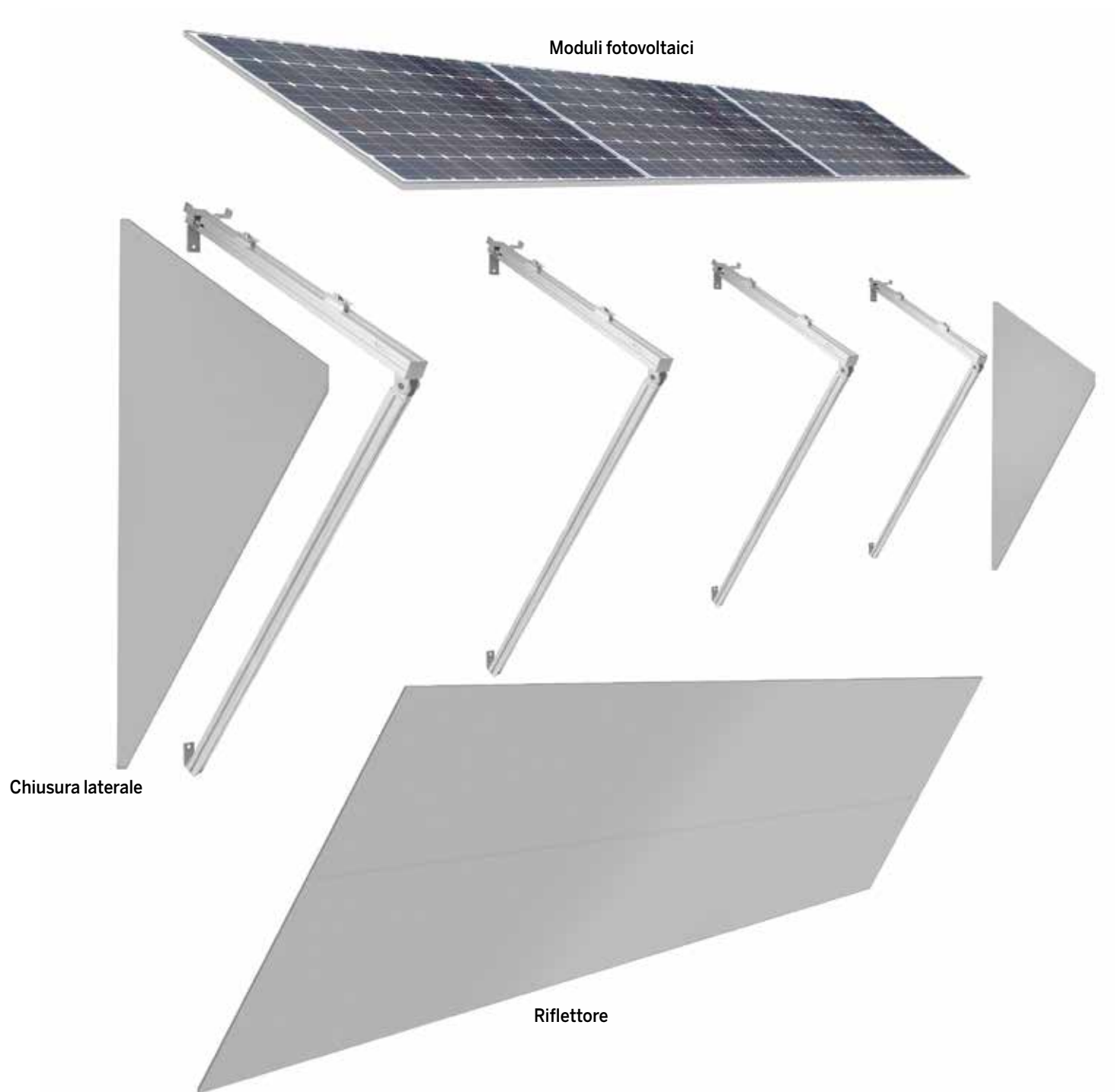
Chiusura laterale



Chiusura inferiore



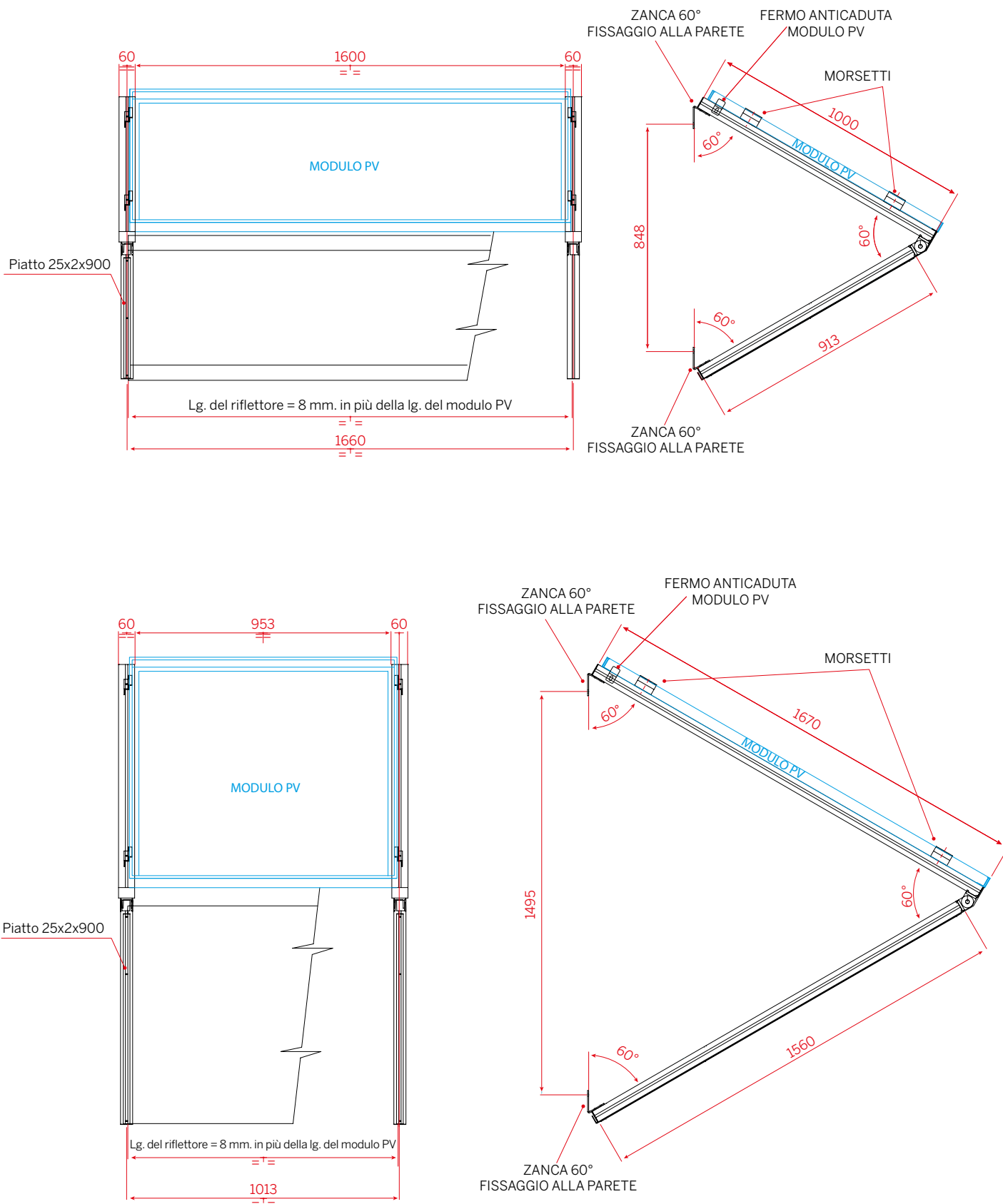
SCHEDA INSTALLAZIONE mod. SRML



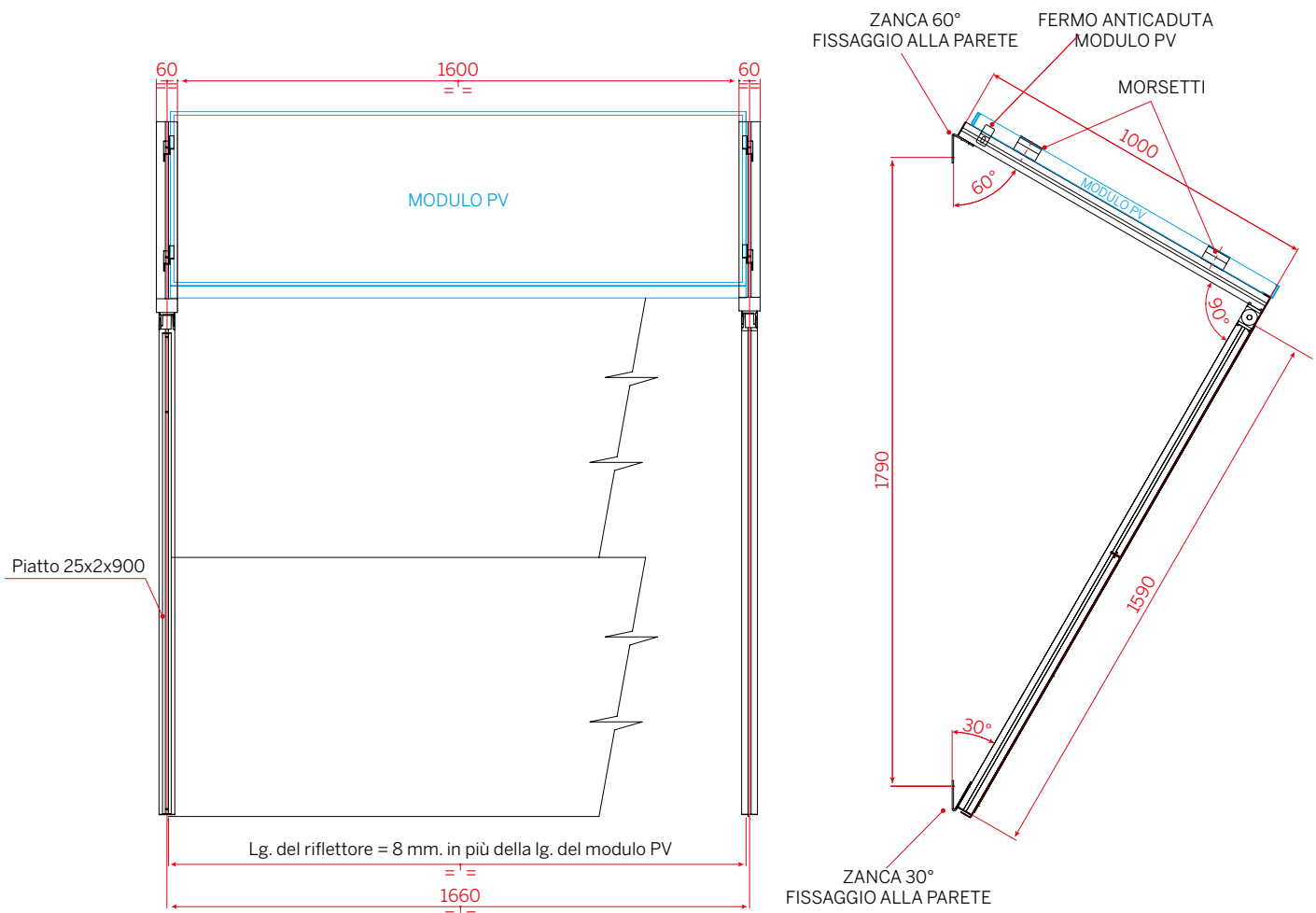
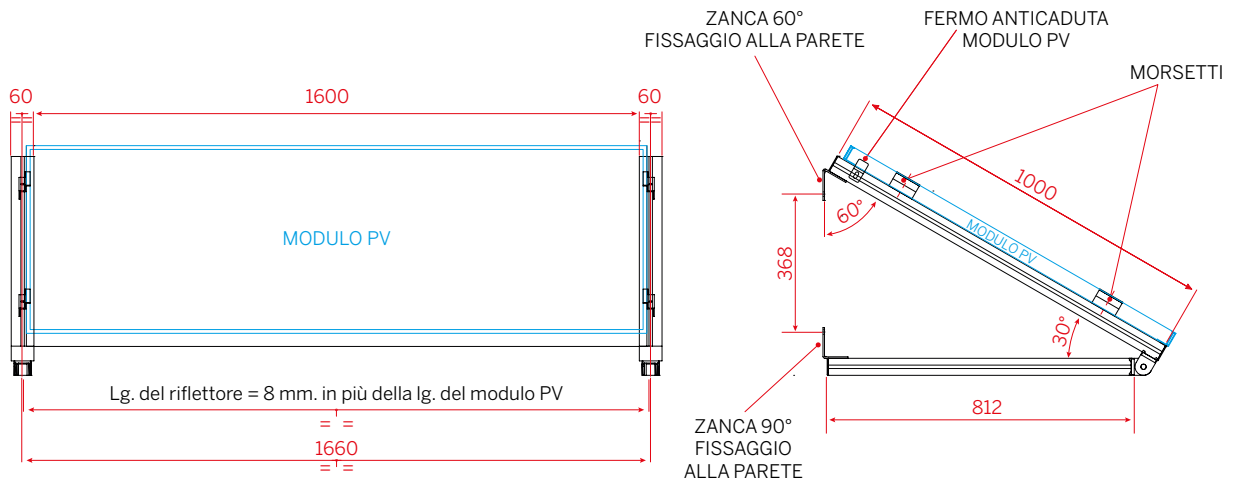
SCHEDA INSTALLAZIONE
mod. SRML
installazione completa



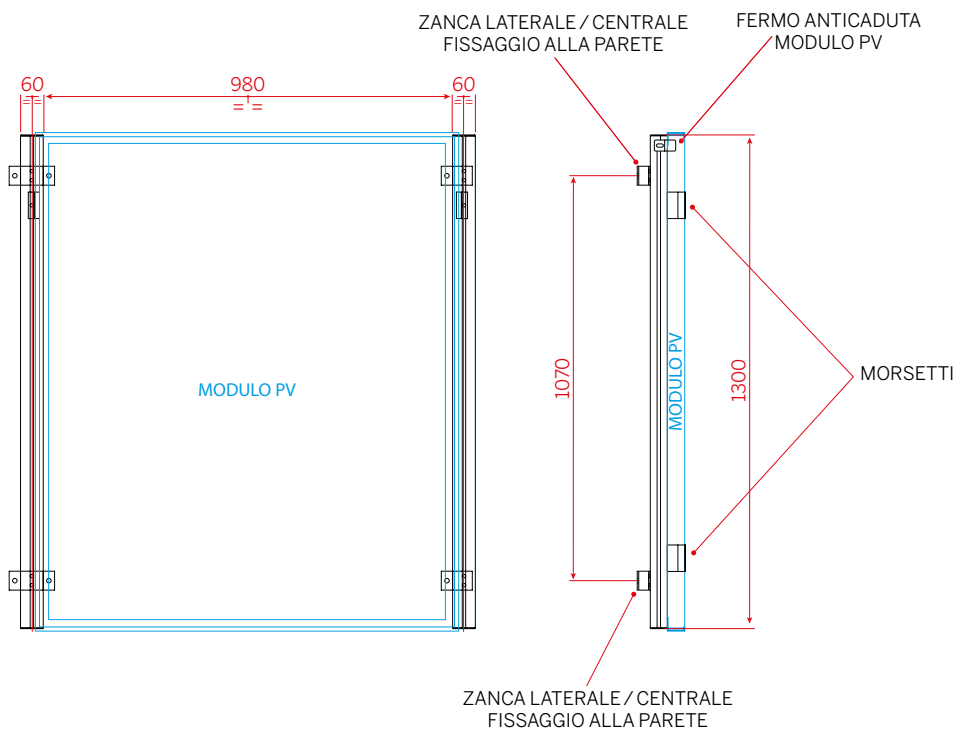
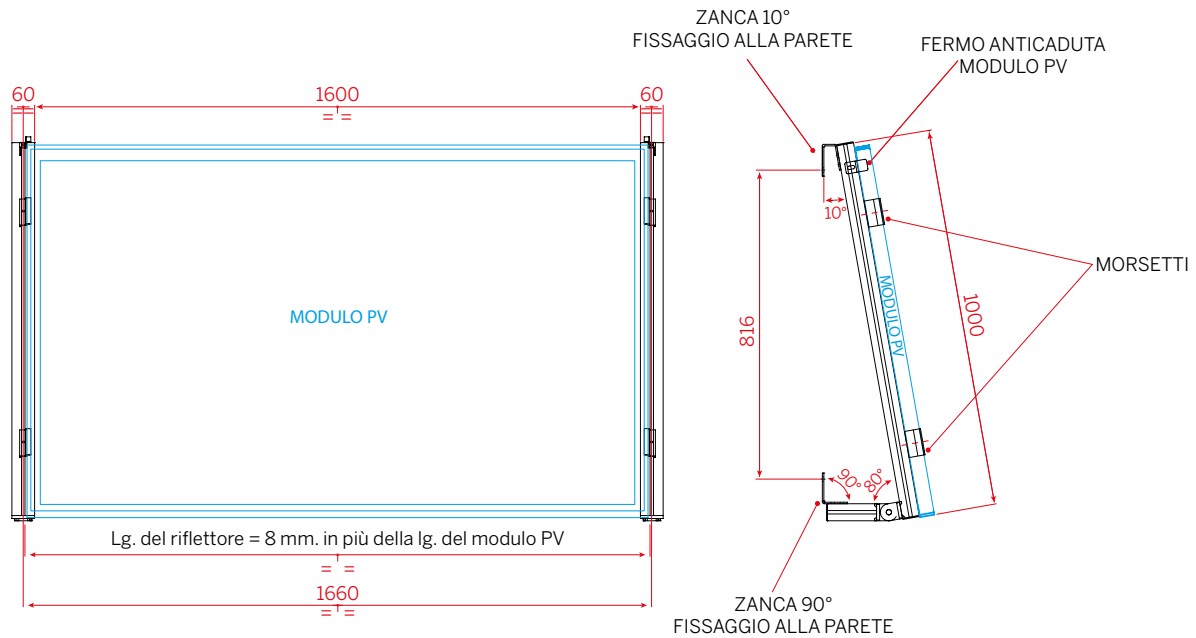
SCHEMA MONTAGGIO mod. SRMC - SRMCT



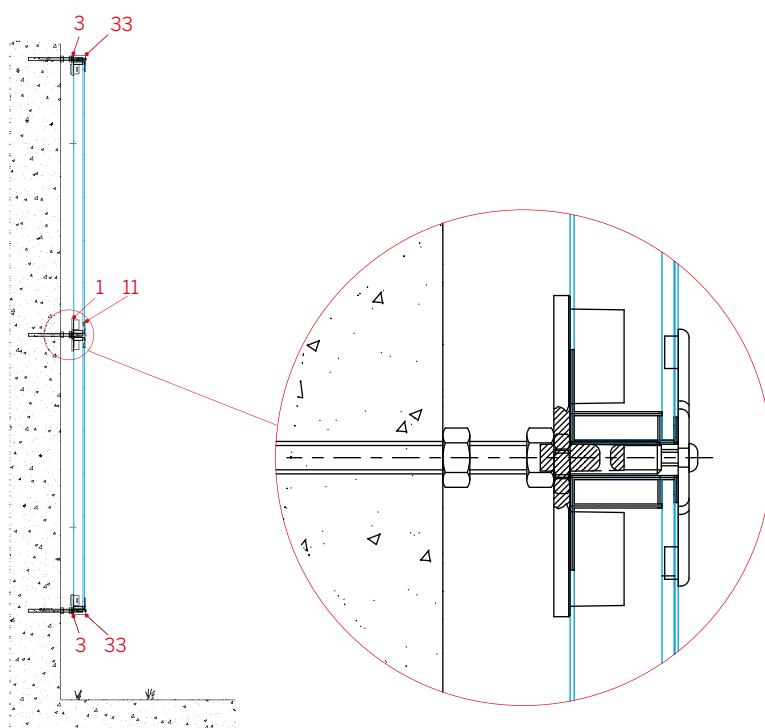
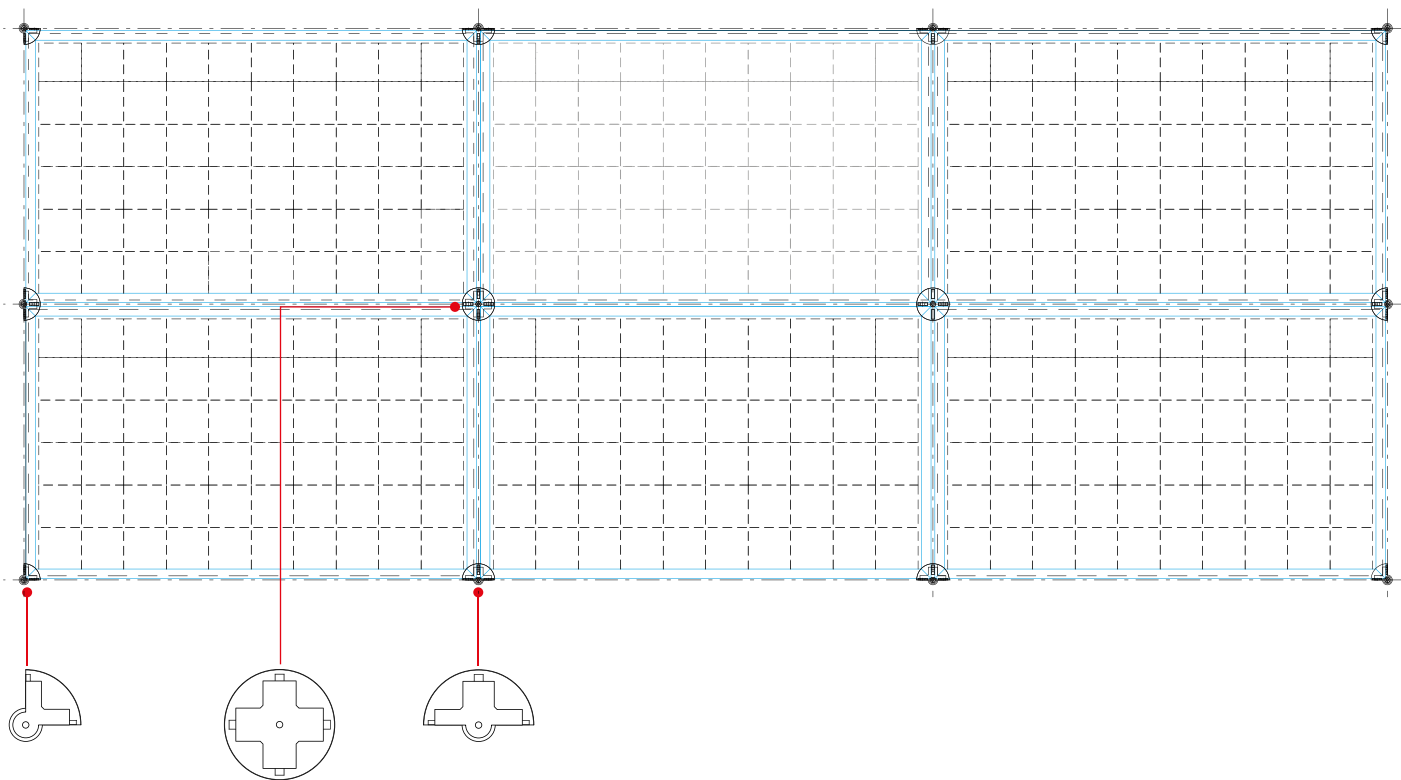
SCHEDA MONTAGGIO mod. SRMP - SRML



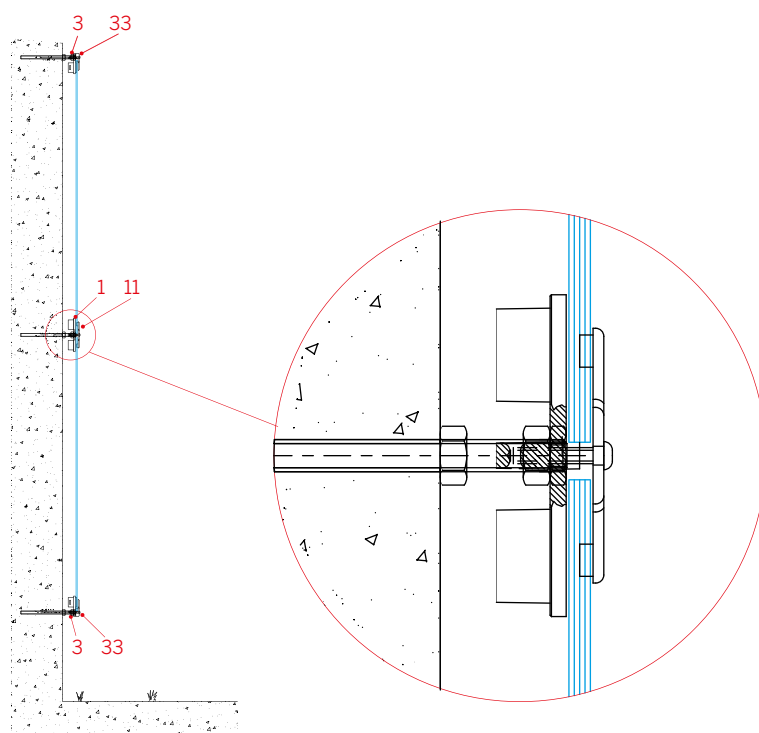
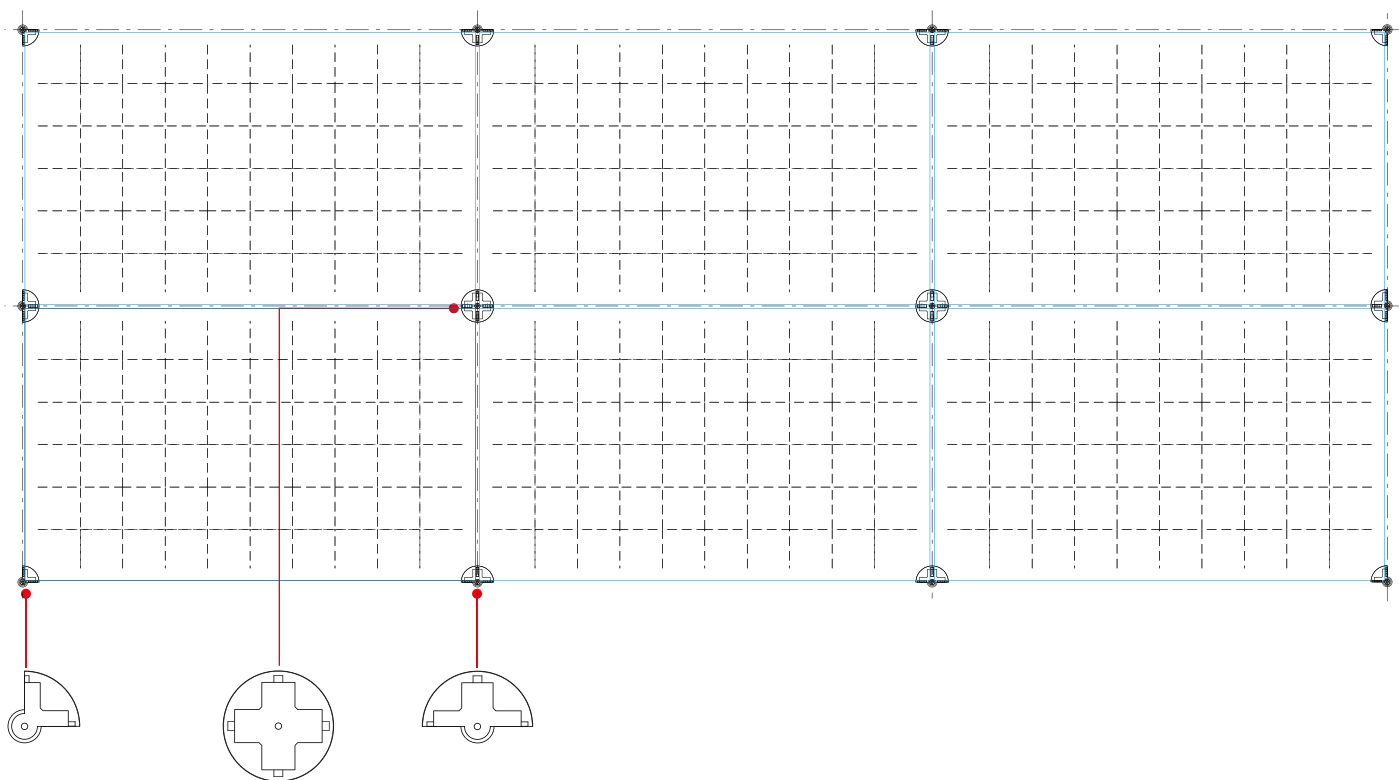
SCHEMA MONTAGGIO mod. SRMCPA - SRMCPB



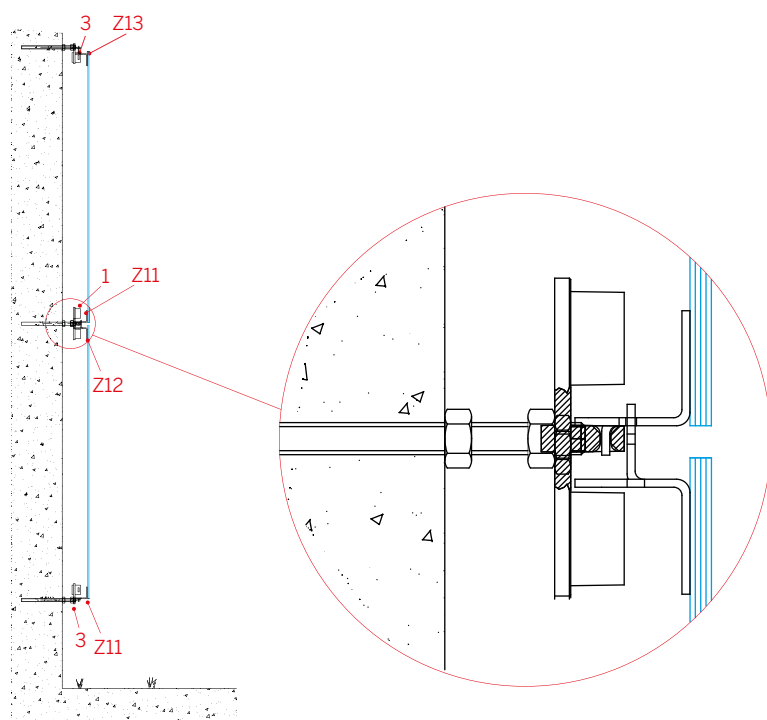
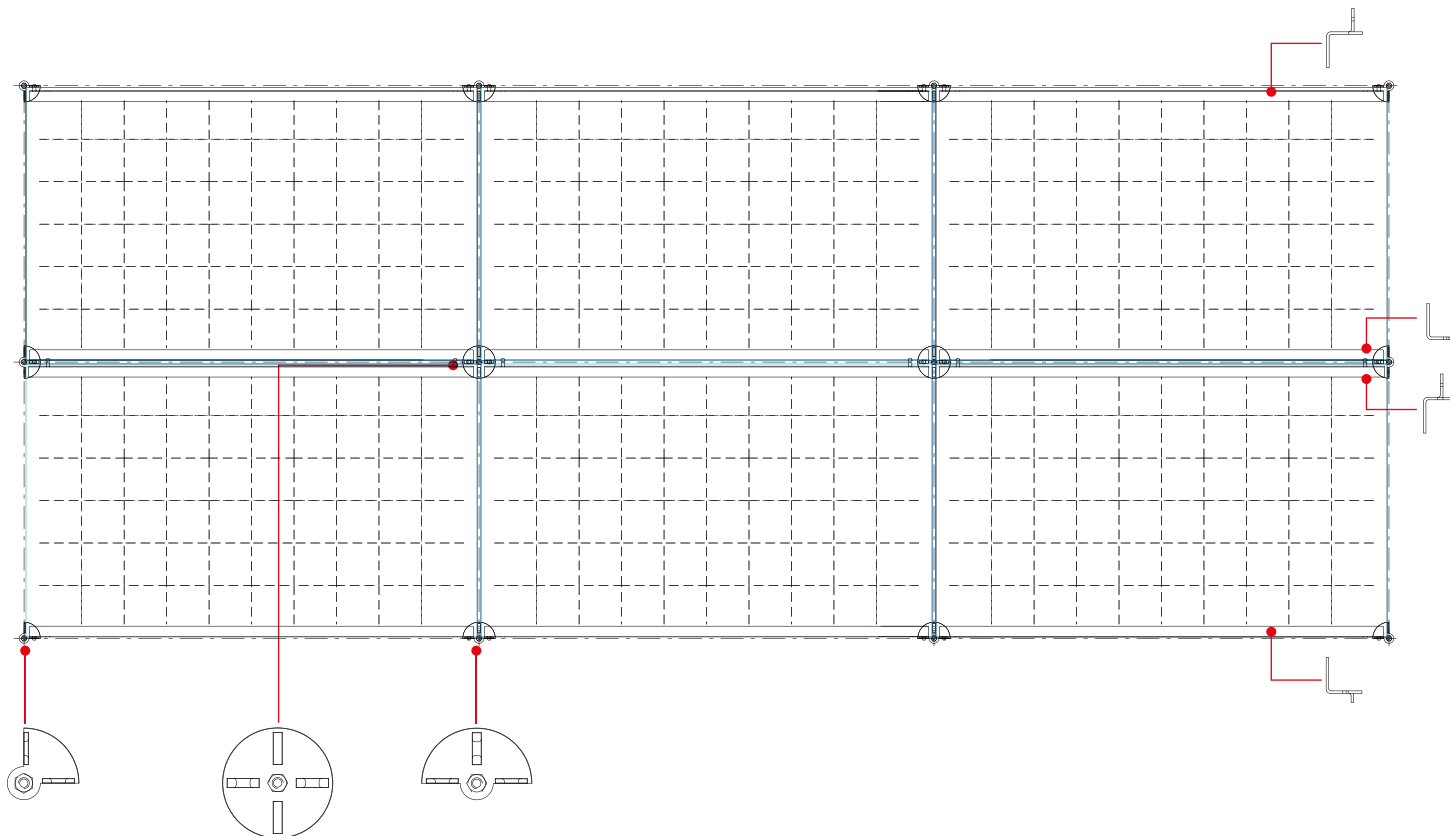
SCHEMA MONTAGGIO mod. SRMCP

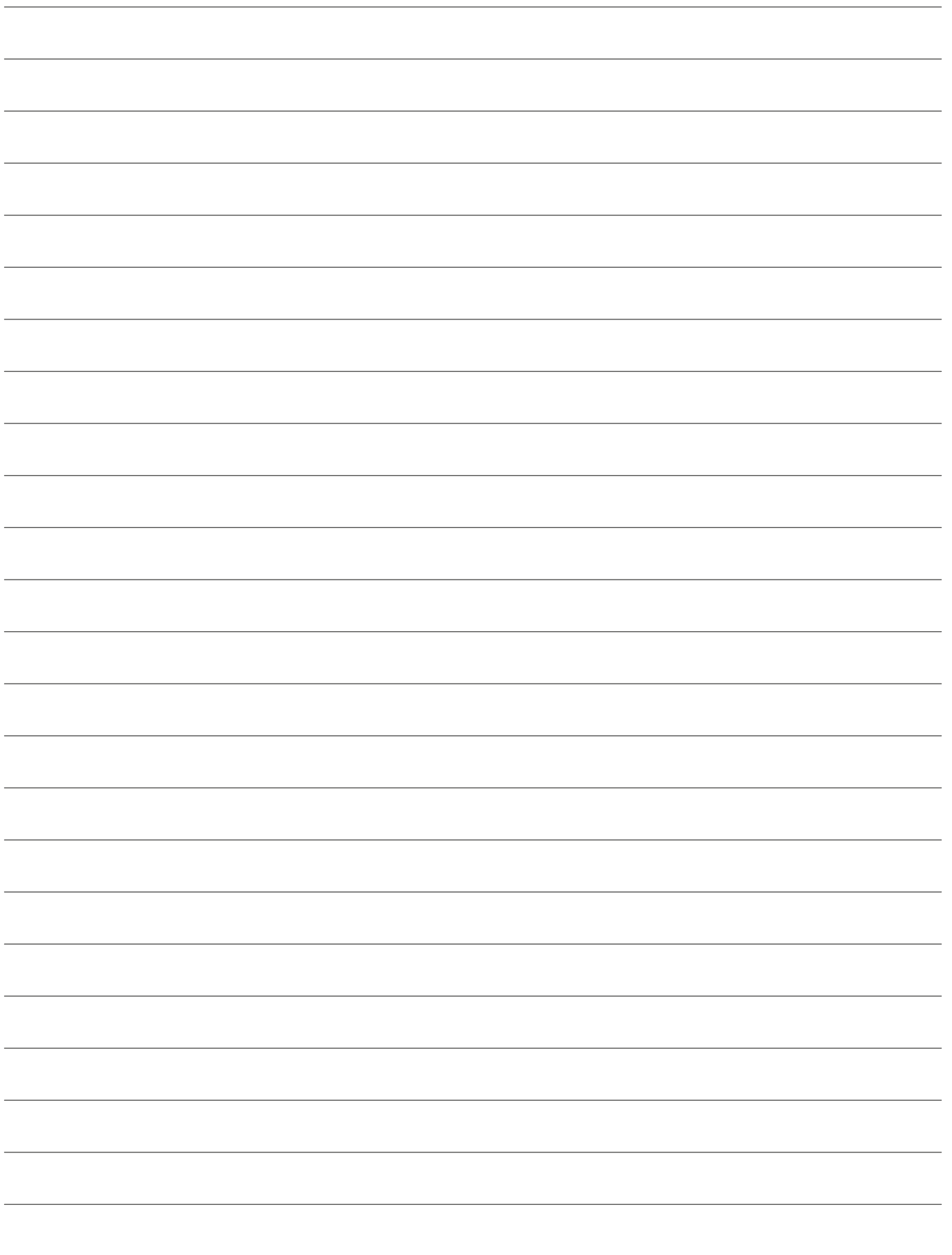


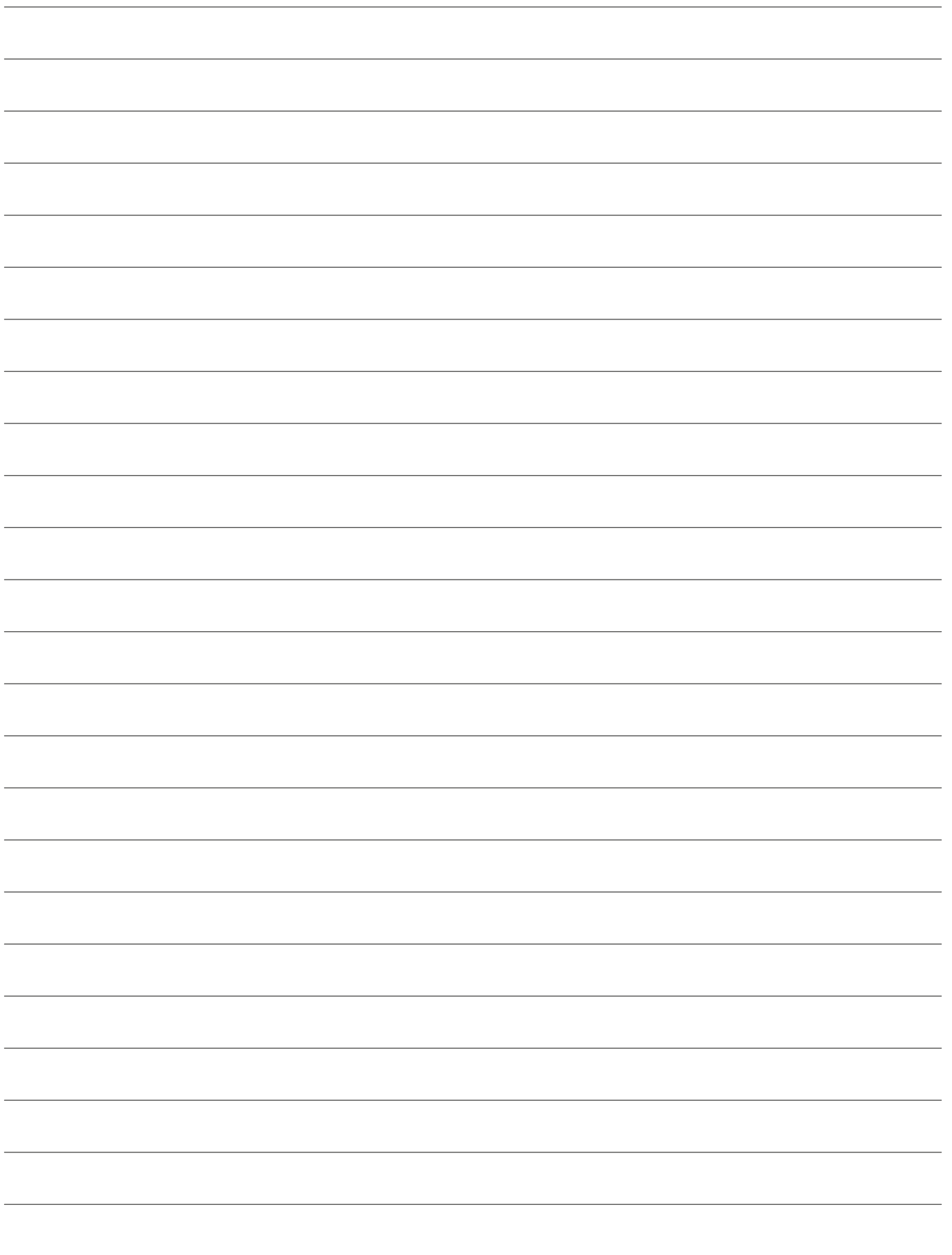
SCHEMA MONTAGGIO mod. SRMCP



SCHEMA MONTAGGIO mod. SRMCP









Solar Retrofit Sagl

Viale Verbano 7

6602 Locarno Muralto (CH)

Tel. +41 (0)91 7519641

Mobile +39 335 6971695

Fax +41 (0)91 7515221

www.solar-retrofit.ch

lanteri.e@solar-retrofit.ch

